

# 3COM SWITCH 4210 10/100 FAMILY



Highly affordable, entry-level managed connectivity for medium-sized businesses and branch office networks

## OVERVIEW

The 3Com® Switch 4210 is a family of Layer 2 entry-level 10/100 LAN switches with enterprise-class QoS, security and management features, delivering high value for network administrators looking for an economical edge device. Available Power over Ethernet (PoE) models are ideal for voice over IP and wireless networking installations; non-PoE models are also available for simple port expansion.

Setting them apart from lower-end “smart managed” devices, the Switch 4210 supports an industry-standard Command Line Interface, Web-based administration, and SNMP management. Switches can be clustered in any combination up to thirty-two units for simplified administration.

In addition to rack-mount 26- and 52-port models, the Switch 4210 is available in small form factor units with nine or 18 ports for enterprise branch and small workgroup deployments, in both PoE and non-PoE variants, with the same manageability as the larger rack-mount versions.

The Switch 4210 comes with 3Com’s limited lifetime warranty covering the unit, power supply and fan; Advanced Hardware Replacement with next business day shipment is available in most regions.

## KEY BENEFITS

### ECONOMICAL, FLEXIBLE LAYER 2 NETWORKING

3Com Switch 4210 switches deliver enterprise-class 10/100 Layer 2 edge connections with Gigabit uplinks. All models are wirespeed and non-blocking for optimum performance. These switches feature

*left:* 3Com Switch 4210 9-Port, Switch 4210 18-Port, Switch 4210 26-Port, Switch 4210 52-Port

*right:* Switch 4210 PWR 9-Port, Switch 4210 PWR 18-Port, Switch 4210 PWR 26-Port

combination ports that can run in one of two modes: 10/100/1000 Mbps connections over copper Ethernet cabling, or 100 or 1000 Mbps over fiber cabling using SFP mini-GBIC technology.

### POWER OVER ETHERNET FOR VOICE-READY NETWORKING

Industry-standard IEEE 802.3af Power over Ethernet is supported on three switches: the 9-, 18- and 26-port PWR models. These switches are ideal for workgroups where phones or wireless access points connect together with user end stations, reducing costs and simplifying the installation of converged voice and wireless networks by providing power over the same Ethernet cabling as used for data.

### PLUG AND PLAY CONVENIENCE

The Switch 4210 automatically selects the optimal speed and duplex mode of cables connected to it, preventing mis-configuration of the network. The switches also detect and adjust to cross-over or straight-through cable connections through its auto-MDI/MDIX feature, which eliminates the need for specific cables.

Link Aggregation Control Protocol (IEEE 802.3ad) further simplifies network configuration, automatically sensing the presence of duplicate links and aggregating them into trunks, thereby maximizing network traffic flow capability.

### SECURE NETWORKING

The Switch 4210 helps ensure secure network access using standard IEEE 802.1X network login with RADIUS Authenticated Device Access (RADA), a 3Com innovation. RADIUS support enables user



3COM

## KEY BENEFITS (continued)

authentication, while the switch is also able to authenticate attached devices (IP phones, for example) via their MAC address for additional endpoint security.

A "Guest" VLAN feature allows temporary users on the network to access the internet, for example, while restricting broader access to sensitive internal resources.

Additional security measures—Secure Shell version 2 (SSH v2) and SNMP v3 with authentication and encryption of network management traffic—are enforced when accessing switch management utilities.

### ENTERPRISE-LEVEL NETWORK CONTROL AND MANAGEMENT

The Switch 4210 family is easy to use and manage, designed to increase business productivity by reliably supporting business applications.

Features usually found only in higher-end enterprise switches are included: a robust industry-standard command line interface is available, along with an embedded web-based interface; the switch also functions with SNMP management tools like the 3Com Enterprise Management System or 3Com Intelligent Management Center; and an internal file system is supported, with the ability to remotely backup and restore configuration files.

Cluster together up to 255 devices for easy administration, with single IP management across 3Com switching lines—with mixed clusters of Switch 4210, 4200G, 4500, 4500G, 4800G, 5500 and 5500G devices.

IPv6 management is also supported; there is no need to replace the switch when upgrading to the latest Internet Protocol standard.

### REDUNDANT POWER SYSTEM SUPPORT

The two 3Com Switch 4210 PWR 26-Port model supports a redundant power system (RPS) connection.

For this model, the RPS unit delivers redundant power to switches so there is continued operation should the switch unit power supply fail. This allows for continuous operation of advanced Enterprise networks, particularly important for converged networks running IP phones on the network.

### 3Com H3C RPS Systems

3Com switches are compatible with 3Com H3C® RPS solutions. These are enterprise-class power redundancy systems that work with many 3Com fixed-configuration switches. 3Com Corporation manufactures networking equipment under the H3C brand for sale into many markets.

The H3C RPS 1000 is 1U high and provides multiple power output connections to support multiple switch units at the same time. Two power rectifiers can be installed for 1+1 load sharing and power redundancy. It supports switches with -54V RPS connections, and delivers sufficient power to fully provision all PoE ports of a switch with full power redundancy.

### PROVEN OPERATING SYSTEM

The 3Com Operating System employed in the Switch 4210 is the same powerful software used in the 3Com Switch 8800 and Switch 7700 modular switches, the Switch 5500 and 4500 stackables, and 3Com enterprise routers. This consolidates administration over the entire switching infrastructure and provides edge-to-core visibility and control when using 3Com management applications such as 3Com Enterprise Management Suite, 3Com Intelligent Management Center and 3Com Network Director.

### ENHANCED FEATURES IN NEWEST MODELS

New models recently introduced now support Access Control Lists for added security, and Auto-Voice VLAN assignment for enhanced convergence support. Products supporting these enhanced features are identified with "A" in the SKU. These advanced features are also available on the Switch 4210 42-Port with updated software.

### WARRANTY AND SERVICES

3Com gives a Limited Lifetime Hardware Warranty on the Switch 4210 Family, including the power supply and fan.

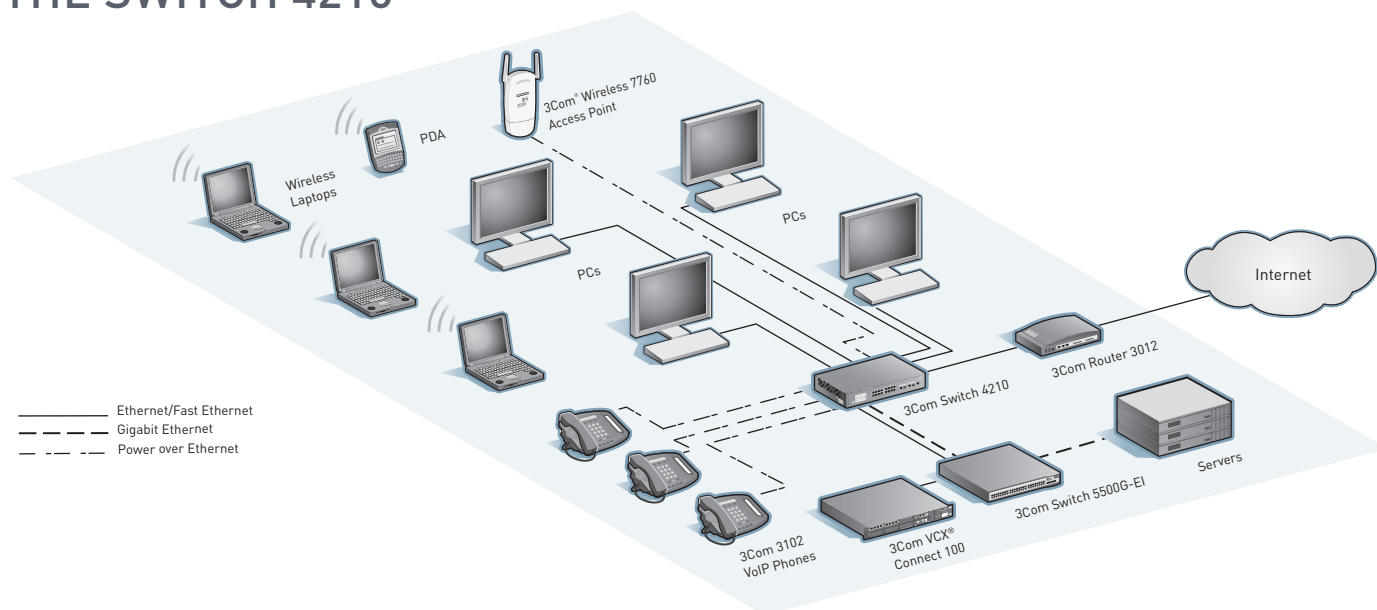
Advance Hardware Replacement, with Next Business Day shipment in most regions, and Limited Lifetime software updates, is provided.

See [www.3com.com/warranty](http://www.3com.com/warranty) for details.

## FEATURE HIGHLIGHTS

FEATURE	DESCRIPTION
IEEE 802.1X network access control	Standards-based security combined with RADIUS authentication
RADIUS Authenticated Device Access	Authentication of attached devices via MAC address for an additional (RADA) level of endpoint security.
Bandwidth rate limiting and four priority queues	Enforce controls on each port for efficient use of network resources and prioritization of delay-sensitive traffic.
"Dual-personality" Gigabit Ethernet interfaces	Choice of copper or fiber media for flexible uplinks.
Multicast filtering with IGMP snooping versions 1, 2 and 3	Eliminate unneeded traffic on the network, improve network efficiency.
Spanning Tree, Rapid Spanning Tree, and Multiple Spanning Tree support	Improve network resiliency and availability.
Power over Ethernet models	Prepare the network for Voice over IP or wireless access points.
100 MB and 1000 MB fiber connections	Use SFPs to add fiber connections to the network. Dual-speed support makes network migration easier.
Secure management	Authentication and encryption of management traffic via Secure Shell (SSH) version 2, HTTPS and SNMP version 3.
Fanless operation, small footprint	Non-PoE units run silently and occupy minimal space.
3Com Operating System	Proven software featured in 3Com premium enterprise switches such as the Switch 4500, 5500, 7700 and 8800 families and enterprise routers like the Router 6000, 5000 and 3000 families.
Service and Support	Backed by 3Com Global Services and authorized partners with demonstrated expertise in network assessment, implementation and maintenance

## SMALL-TO-MEDIUM LAN CONFIGURATION SUPPORTED BY THE SWITCH 4210



## PRODUCT WARRANTY AND OTHER SERVICES

Warranty	3Com Limited Lifetime Warranty. For as long as the original end user owns the product, or for five years after 3Com discontinues the sale of the product, whichever occurs first.
Hardware coverage	Covers the complete unit including power supply and fan.
In-warranty hardware replacement*	Advanced Hardware Replacement of hardware for the duration of the warranty. In the US 48 contiguous states this is same-day ship with next business day delivery when call received before noon Pacific time. For Canada, Alaska and Hawaii, this is same-day ship when call received before noon Pacific time. For the rest of the world, it is next-business-day ship. Actual delivery times may vary depending on customer location. Reasonable commercial efforts apply.
Software coverage	90 days for media replacement.
Software updates*	Access to releases with incremental software features and bug fixes. For the Switch 4210, updates are all releases within the licensed 3Com OS software level.
Online Knowledgebase support*	Access to online troubleshooting tool for the duration of the warranty.

\* These services are not included as part of the Warranty and 3Com reserves the right to modify or cancel this offering at any time, without advance notice. This offering is not available where prohibited by law. Services are effective at warranty start date, and are enabled with product registration. Customers receive a user ID with eSupport registration.

## SERVICE AND SUPPORT

3Com Global Services offers the resources and talents of a major corporation plus more than two decades of experience in resolving network challenges and delivering business benefits to enterprises around the world.

Global support with a personalized focus in the local language helps drive productivity and minimize expenses. Because 3Com understands both the technology and the business, we're the partner you need to maintain your competitive edge and remain strong.

### Additional Service, Support and Training Offerings

#### Network Health Check

An activity-auditing service focused on improving network performance and productivity

Includes traffic monitoring, utilization analysis, problem identification, and asset deployment recommendations

Extensive report provides blueprint for action

#### Network Installation and Implementation Services

Experts set-up and configure equipment and integrate technologies to maximize functionality and minimize business disruption

For large and complex sites, implementation services include personalized configuration, project management, extended testing and coaching on network administration

#### Project Management

Provides extra focus and resources that special projects demand

3Com engineers manage entire process from initial specifications to post-project review

Using structured methodology, requirements are identified, projects planned and progress of implementation activities tracked

#### 3Com Guardian<sup>SM</sup> Maintenance Service

This service provides comprehensive on-site support and includes advance hardware replacement, expedited telephone technical support and software upgrades

#### 3Com Express<sup>SM</sup> Maintenance Service

This service provides speedy access to 3Com shipment of advance hardware replacements (including a four-hour option), expedited telephone technical support and software upgrades

#### Global Education and Training

Self-paced and instructor-led technology and product courses, plus certification programs

For additional information, please visit [www.3com.com/services](http://www.3com.com/services)

# SPECIFICATIONS

All information in this section is relevant to all members of the 3Com Switch 4210 family, unless otherwise stated.

## CONNECTORS

### 9-port

8 10BASE-T/100BASE-TX ports and 1 dual-personality 10/100/1000 or SFP port

10/100 and 10/100/1000 ports are auto-negotiating, configured as auto-MDI/MDIX

RJ-45 console port

IEEE 802.3af in-line power on 4 10/100 ports (PWR model)

### 18-port

16 10BASE-T/100BASE-TX ports and 2 dual-personality 10/100/1000 or SFP ports

10/100 and 10/100/1000 ports are auto-negotiating, configured as auto-MDI/MDIX

RJ-45 console port

IEEE 802.3af in-line power on 8 10/100 ports (PWR model)

### 26-port

24 10BASE-T/100BASE-TX ports and 2 dual-personality 10/100/1000 or SFP ports

10/100 and 10/100/1000 ports are auto-negotiating, configured as auto-MDI/MDIX

RJ-45 console port

IEEE 802.3af in-line power on all 10/100 ports (PWR model)

### 52-port

48 10BASE-T/100BASE-TX and 2 10/100/1000 ports, and 2 SFP ports

10/100 and 10/100/1000 ports are auto-negotiating, configured as auto-MDI/MDIX

RJ-45 console port

## PERFORMANCE

### 9-port

3.6 Gbps switching capacity (max.), 2.7 Mpps forwarding rate (max.)

### 18-port

7.2 Gbps switching capacity (max.), 5.4 Mpps forwarding rate (max.)

### 26-port

8.8 Gbps switching capacity (max.), 6.6 Mpps forwarding rate (max.)

### 52-port

17.6 Gbps switching capacity (max.), 13.1 Mpps forwarding rate (max.)

### All models

Switch fabric bandwidth: 19.2 Gbps

Wirespeed performance across ports in full mesh configuration

Store-and-forward switching; latency <10 μs

## LAYER 2 SWITCHING

8,192 MAC addresses in address table

1,024 static MAC addresses (in addition to default address)

4,094 Port-based VLANs (IEEE 802.1Q)

GARP VLAN Registration Protocol (GVRP)

Multicast VLAN Registration (MVR)

IEEE 802.3ad Link Aggregation Control Protocol (LACP); automated and manual aggregation

Per-switch trunk groups:

- 2 groups (9- and 18- port)
- 3 groups (26-port)
- 6 groups (52-port)
- 8 10/100 ports or 2 Gigabit ports per group

Auto-negotiation of port speed and duplex

IEEE 802.3x full-duplex flow control

Back pressure flow control for half duplex

Broadcast storm suppression

IEEE 802.1D Spanning Tree Protocol (STP)

IEEE 802.1w Rapid Spanning Tree Protocol (RSTP)

IEEE 802.1s Multiple Spanning Tree Protocol (MSTP)

Spanning Tree enable / disable per port

Spanning Tree fast-start mode

Bridge Protocol Data Unit (BPDU) protection

Internet Group Management Protocol (IGMP) snooping v1, 2 and 3

Filtering for 256 multicast groups

DHCP snooping

## CONVERGENCE

Four hardware queues per port

Weighted Round Robin queuing

IEEE 802.1p Class of Service/Quality of Service (CoS/QoS) on egress

Link Layer Discovery Protocol (LLDP) and LLDP-MED

## SECURITY

Auto Voice VLAN (only models with "A" in SKU and 52-Port model)

IEEE 802.1X Network login user authentication:

- EAP over LAN (EAPoL) transport with EAP-MD5, PAP, CHAP, PEAP and EAP-TLS authentication

- Multiple users per port

RADIUS and HWTACACS server authentication

RADIUS Authenticated Device Access (RADA): authenticate devices based on MAC address against RADIUS server

Port-based MAC address Disconnect Unknown Device (DUD)

SNMP v3 encryption

SSH v2

HTTPS secure web access

Denial of Service protection

Access Control Lists (only models with "A" in SKU and 52-Port model)

## CLUSTERED STACKING

Local switch log-in password

Switch login via RADIUS

Trusted IP Management Addresses

Isolated port in VLAN

Blackhole MAC address

Auto-VLAN assignment based on log-in

Single IP address and management interfaces for centralized control

Up to 255 devices per cluster across Switch 4210, 4200G, 4500, 4500G, 4800G, 5500 and 5500G devices

## MANAGEMENT

3Com Operating System / Comware V3

CLI via console or Telnet

Embedded web management interface, access via HTTP and HTTPS

System configuration with SNMP v1, 2c and 3

Remote Monitoring (RMON) groups statistics, history, alarm and events

Clear text configuration files for easy administration with backup and restore

System file transfer mechanisms: FTP, Trivial FTP (TFTP), Secure FTP (SFTP)

Configuration backup and restore

Port mirroring – N:1

IP address allocation via DHCP, bootP

Network Time Protocol

IPv6 management

Syslog

Link Layer Discovery Protocol (LLDP / LLDP-MED)

### 3Com management applications:

- 3Com Enterprise Management Suite for flexible, extensible management in advanced enterprise IT environments
- 3Com Intelligent Management Center, Enterprise Edition for comprehensive management with the rich functionality required to meet the needs of advanced Enterprise networks
- 3Com Network Director for complete, turn-key network management for the enterprise
- 3Com Network Supervisor for basic, turn-key network management for mid-market businesses
- 3Com Network Access Manager for IEEE 802.1X and RADA integration with IAS/Active Directory



## SPECIFICATIONS (continued)

### DIMENSIONS

#### 9-port non-PWR

Height: 45 mm (1.7 in or 1 RU)

Width: 230 mm (9.1 in)

Depth: 160 mm (6.3 in)

Weight: 1.06 kg (2.3 lbs)

#### 18-port non-PWR

Height: 45 mm (1.7 in or 1 RU)

Width: 360 mm (14.2 in)

Depth: 160 mm (6.3 in)

Weight: 1.53 kg (3.4 lbs)

#### 26-port non-PWR

Height: 45 mm (1.7 in or 1 RU)

Width: 440 mm (17.3 in)

Depth: 160 mm (6.3 in)

Weight: 2.14 kg (4.7 lbs)

#### 52-port non-PWR

Height: 45 mm (1.7 in or 1 RU)

Width: 440 mm (17.3 in)

Depth: 230 mm (9.1 in)

Weight: 3.10 kg (6.8 lbs)

#### 9-port PWR

Height: 45 mm (1.7 in or 1 RU)

Width: 300 mm (11.8 in)

Depth: 233 mm (9.2 in)

Weight: 2.22 kg (4.9 lbs)

#### 18-port PWR

Height: 45 mm (1.7 in or 1 RU)

Width: 300 mm (11.8 in)

Depth: 275 mm (10.8 in)

Weight: 2.7 kg (6.0 lbs)

#### 26-port PWR

Height: 45 mm (1.7 in or 1 RU)

Width: 440 mm (17.3 in)

Depth: 430 mm (16.9 in)

Weight: 6.09 kg (13.4 lbs)

### MOUNTING

9- and 18-port models are free-standing

26- and 52-port models are free-standing or 19" rack mount

### POWER SUPPLY

AC Line Frequency: 50/60 Hz

Input Voltage: 90-240 VAC

#### Current rating (AC)

9-, 18-, and 26-port non-PWR: 0.4A

52-port non-PWR: 0.8A

9-port PWR: 2.0A

18-port PWR: 3.5A

26-port PWR: 8.0A

#### Power consumption (max)

9-port non-PWR: 9 W

18-port non-PWR: 12 W

26-port non-PWR: 13 W

52-port non-PWR: 21 W

9-port PWR: 23 W, plus up to 62 W for PoE

18-port PWR: 24 W, plus up to 123 W for PoE

26-port PWR: 36 W, plus up to 370 W for PoE

9-port A non-PWR: 12 W\*

26-port A non-PWR: 17 W\*

26-port A PWR: 95 W, plus up to 370 W for PoE\*

\*preliminary data

### ENVIRONMENTAL REQUIREMENTS

Operating temperature: 0° to 40°C (32° to 104°F)

Storage temperature: -40° to 70°C (-40° to 158°F)

Humidity (operating and storage): up to 95% non-condensing

Standard: EN 60068 (IEC 68)

### HEAT DISSIPATION (MAX)

9-port non-PWR: 32 BTU/hour

18-port non-PWR: 40 BTU/hour

26-port non-PWR: 45 BTU/hour

52-port non-PWR: 72 BTU/hour

9-port PWR: 78 BTU/hour; excludes heat from PoE

18-port PWR: 80 BTU/hour; excludes heat from PoE

26-port PWR: 122 BTU/hour; excludes heat from PoE

### ELIABILITY

(MTBF @ 25°C)

9-port: 54 years (473,000 hours)

18-port: 50 years (438,000 hours)

26-port: 49 years (430,000 hours)

52-port: 40 years (350,000 hours)

9-port PWR: 53 years (465,000 hours)

18-port PWR: 46 years (403,000 hours)

26-port PWR: 41 years (359,000 hours)

### IEEE STANDARDS SUPPORTED

IEEE 802.1D Spanning Tree Protocol (STP)

IEEE 802.1p QoS

IEEE 802.1Q VLANs / VLAN tagging

IEEE 802.1s Multiple Spanning Tree

IEEE 802.1w Rapid Spanning Tree

IEEE 802.1X Network Login Security

IEEE 802.3 Ethernet

IEEE 802.3ad Link Aggregation (unit wide)

IEEE 802.3i 10BASE-T

IEEE 802.3u Fast Ethernet

IEEE 802.3x Flow control

IEEE 802.3z Gigabit Ethernet 1000BASE-X

### IETF STANDARDS

RFC 783 TFTP Protocol

RFC 791 IP

RFC 793 TCP

RFC 826 Address Resolution Protocol (ARP)

RFC 854 Telnet

RFC 1157 SNMP v1, v2

RFC 1212 Concise MIB definitions

RFC 1305 Network Time Protocol (NTP) v3

RFC 1350 Remote software upgrade TFTP

RFC 1881 IPv6 address allocation management

RFC 1886 DNS extensions to support IPv6

RFC 1887 Architecture for IPv6 Unicast address allocation

RFC 1924 Compact representation of IPv6 addresses

RFC 2131 DHCP client

RFC 2236 Internet Group Management Protocol (IGMP) snooping

RFC 2284 Network login 802.1X

RFC 2373 IPv6 addressing architecture

RFC 2452 IPv6 MIB for the transmission control protocol

RFC 2454 IPv6 MIB for the user diagram protocol

RFC 2460 IPv6 specification

RFC 2461 Neighbor discovery for IPv6

RFC 2463 ICMPv6 for IPv6

RFC 2464 Transmission of IPv6 over Ethernet

RFC 2465 MIB of IPv6, textual conversations and general group

## SPECIFICATIONS (continued)

RFC 2466 MIB for IPv6 ICMPv6 group  
 RFC 2526 Reserved IPv6 anycast address  
 RFC 2581 TCP congestion control  
 RFC 2616 HTTP compatibility  
 RFC 2767 dual stacks IPv4 and IPv6  
 RFC 2819 RMON 4 groups  
 RFC 2865 Remote authentication dial-in user (RADIUS)  
 RFC 2866 RADIUS RFC 2138 / Accounting  
 RFC 3376 Internet Group Management Protocol (IGMP) Snooping  
 RFC 3484 Default address selection for IPv6  
 RFC 3493 Basic socket interface for IPv6  
 RFC 3513 IPv6 Addressing Architecture  
 RFC 3542 Advanced sockets API for IPv6  
 RFC 3587 IPv6 Global Unicast Address  
 RFC 4443 Internet Control Message Protocol (ICMPv6) for IPv6

### Management, including MIBs Supported

RFC 1213 SNMP MIB II  
 RFC 1215 SNMP Traps  
 RFC 1493 Bridge MIB  
 RFC 1757 RMON I MIB  
 RFC 1907 SNMP v2c, SMI v2 and Revised MIB-II  
 RFC 2096 IP Forwarding Table MIB  
 RFC 2233 Interfaces MIB  
 RFC 2571 SNMP Framework MIB  
 RFC 2573 SNMP Notification MIB / Target MIB  
 RFC 2574 SNMPv3 MIB  
 RFC 2575 SNMP Access Control  
 RFC 2618 RADIUS Authentication Client MIB  
 RFC 2620 RADIUS Accounting Client MIB  
 RFC 2665 EtherLike MIB  
 RFC 2674 Bridge MIB Extensions Q-Bridge, P-Bridge, Extensions  
 RFC 2737 Entity MIB

RFC 2819 RMON I MIB  
 RFC 2863 Disc-sizing MIB  
 RFC 2925 Definitions of managed objects for remote ping, traceroute, and lookup operations  
 RFC 3414 SNMP User based SM MIB  
 RFC 3415 SNMP View based ACM MIB  
 RFC 3418 SNMP v2 MIB

### EMISSIONS/AGENCY APPROVALS

EN 55022 Class A  
 FCC Part 15 Subpart B Class A  
 ICES-003 Class A  
 VCCI Class A

### IMMUNITY

EN 55024

### SAFETY AGENCY CERTIFICATIONS

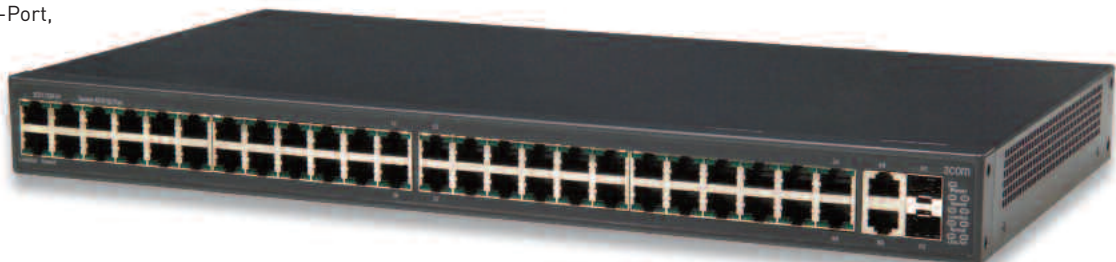
UL 60950-1  
 EN 60950-1  
 CSA 2.22 # 60950  
 IEC 60950-1  
 EU RoHS Compliant

### WARRANTY AND OTHER SERVICES

Limited Lifetime Hardware Warranty, including fans and power supply  
 Limited Software Warranty for 90 days  
 Advance Hardware Replacement with Next Business Day shipment in most regions  
 Limited Lifetime software updates  
 90 days of telephone technical support  
 Refer to [www.3com.com/warranty](http://www.3com.com/warranty) for details.



3Com Switch 4210 PWR 26-Port,  
 Switch 4210 52-Port



## ORDERING INFORMATION

PRODUCT DESCRIPTION	3COM SKU
3Com Switch 4210 9-Port	3CR17331-91 or 3CR17331A-91
3Com Switch 4210 18-Port	3CR17332-91
3Com Switch 4210 26-Port	3CR17333-91 or 3CR17333A-91
3Com Switch 4210 52-Port	3CR17334-91
3Com Switch 4210 PWR 9-Port	3CR17341-91
3Com Switch 4210 PWR 18-Port	3CR17342-91
3Com Switch 4210 PWR 26-Port	3CR17343-91 or 3CR17343A-91
<b>FAST ETHERNET SFP TRANSCEIVERS</b>	
100BASE-FX SFP	3CSFP81
100BASE-BX10-D SFP	3CSFP85
100BASE-BX10-U SFP	3CSFP86
<b>GIGABIT SFP TRANSCEIVERS</b>	
1000BASE-SX SFP	3CSFP91
1000BASE-LX SFP	3CSFP92
1000BASE-LH SFP	3CSFP97

\*Check for availability of "A SKUs" in your region.

PRODUCT DESCRIPTION	3COM SKU
<b>ACCESSORIES</b>	
Rack Mount Kit for Switch 4210 9-Port	2150A025
Rack Mount Kit for Switch 4210 18-Port	2150A01A
Rack Mount Kit for Switch 4210 26-Port	Included
Rack Mount Kit for Switch 4210 52-Port	Included
Rack Mount Kit for Switch 4210 PWR 9-Port	2150A026
Rack Mount Kit for Switch 4210 PWR 18-Port	2150A026
Rack Mount Kit for Switch 4210 PWR 26-Port	Included
<b>3COM GLOBAL SERVICES</b>	
3Com Network Health Check, Installation Services, and Express <sup>SM</sup> Maintenance	<a href="http://www.3com.com/services_quote">www.3com.com/services_quote</a>
3Com Global Education and Training	<a href="http://www.education.3com.com">www.education.3com.com</a>

Visit [www.3com.com](http://www.3com.com) for more information about 3Com network solutions.

3Com Corporation, Corporate Headquarters, 350 Campus Drive, Marlborough, MA 01752-3064  
3Com is publicly traded on NASDAQ under the symbol COMS.

Copyright © 2010 3Com Corporation. All rights reserved.

3Com and the 3Com logo are registered trademarks, and Guardian and Express are service marks, of 3Com Corporation in various countries worldwide. H3C is a registered trademark of H3C Technologies Co., Ltd., a wholly owned subsidiary of 3Com Corporation. All other company and product names may be trademarks of their respective companies. While every effort is made to ensure the information given is accurate, neither 3Com nor H3C accept liability for any errors or mistakes which may arise. All specifications are subject to change without notice.

401270-001 03/10

