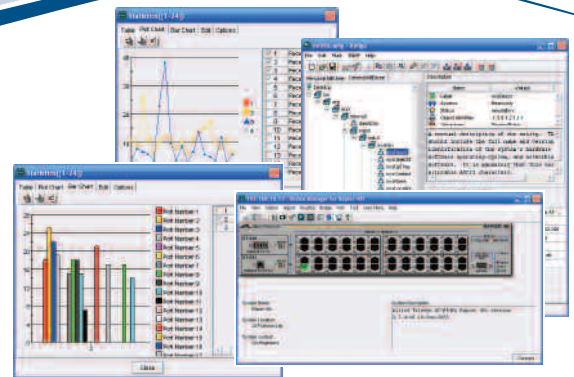


## ALLIEDVIEW™-EMS

### Network Device Management Software



#### AlliedView-EMS 3.10

Network Device Management Software

##### Ease of Use

With AlliedView-EMS, you can view details of all the managed Allied Telesis products on your network from a user-friendly, window-based interface. Display the physical view of a device and see color-coded port and module configurations, click on a port to display its communication statistics or even change device settings to improve data flow. All in a matter of minutes, all in an intuitive graphical environment.

##### Automated Response

With RMON support for Statistics, History, Alarm and Event, it has never been easier to proactively monitor your network. Chart line traffic usage, packet size class, error packet classifications and more to analyze your network's health in real-time and optimize its performance.

##### Remote Management

To truly manage your network, device monitoring is only half the battle. With AlliedView-EMS, you can configure any supported SNMP Management Information Base (MIB) variable such as full/duplex settings, IP routing, and more.

##### Flexibility

Java-based AlliedView-EMS has been designed to run in both Unix and Windows environments, either as an add-on to network management solutions for large networks, or as a standalone application for smaller ones.

AlliedView-EMS is a Java-based network device management solution from Allied Telesis. Whether managing a large network distributed across multiple sites, or small networks with only a handful of nodes, AlliedView-EMS provides the tools needed to effectively monitor and proactively manage Allied Telesis' intelligent networking products.

##### Lower Cost of Ownership

The ultimate value of AlliedView-EMS lies in lowering the Total Cost of Ownership (TCO) of your network. Drive down your network management costs by leveraging the monitoring, analysis and configuration tools. Reduce your downtime costs by identifying problems quickly. Finally, minimize your training costs by taking advantage of AlliedView-EMS' platform independence; interoperability with HP OpenView, Tivoli NetView, Ipswitch WhatsUp and SNMPc; and an intuitive, easy-to-understand graphic interface.

##### Integrated Bundles

Available as an integrated package with our AT-SNMPc product line, AlliedView-EMS gives you detailed device information of your network with our enterprise and workgroup versions. As SNMPc supports a multi-level hierarchical map to outline your network, monitoring your devices becomes as easy as a double click on the mouse.

#### Key Features

- Intuitive graphical interface
- Drill-down functionality
- MIB browser
- MIB compiler
- GUI snapshot utility
- RMON 4 group support
- Supports NMS alarms
- Supports SNMP v1, v2c and v3
- VLAN management
- QoS management
- Multi-platform
- HP OpenView, Tivoli NetView, Ipswitch WhatsUp and SNMPc interoperability
- Supports Allied Telesis managed devices

#### Free 30-Day Trial

To receive a free 30-day evaluation copy of AlliedView-EMS, visit [www.alliedtelesis.com](http://www.alliedtelesis.com) today.

## System Requirements

Windows 2000 (SP3 or later)

Windows XP (SP1 or later)

Windows 2003

64MB RAM (128MB+ recommended)  
200MB disk space during installation  
100MB disk space during operation  
166MHz Pentium-compatible processor  
(400MHz+ recommended)

Sun OS 5.8/Solaris 8

128MB RAM (256MB recommended)  
220MB disk space during installation  
110MB disk space during operation  
15MB minimum swap partition  
Ultra 10 or higher processor

HP-UX 11

128MB RAM (256MB recommended)  
390MB disk space during installation  
195MB disk space during operation  
15MB minimum swap partition  
HP 9000 workstations  
HP Visualize workstations

Display:

1024 x 768 or above  
(64K colors or more)

NMS platforms supported:

HP OpenView Network Node Manager  
6.20, 7.0

Castle Rock SNMPc 5.1.6c, 6.0,  
7.0 and 7.1

Tivoli NetView 7.1.3

Ipswitch WhatsUp Professional 2006

## Devices Supported

Device support is updated frequently, please contact  
your Allied Telesis sales representative or visit  
[www.alliedtelesis.com](http://www.alliedtelesis.com) to get all the latest updates.

### Hubs

AT-FH12u  
AT-FH824u

### Routers

AT-AR240E  
AT-AR250E  
AT-AR255E  
AT-AR300  
AT-AR300L  
AT-AR320  
AT-AR350  
AT-AR370S  
AT-AR370U  
AT-AR410  
AT-AR415S  
AT-AR440S  
AT-AR441S  
AT-AR442S  
AT-AR450S  
AT-AR720  
AT-AR725  
AT-AR725 (-48VDC)  
AT-AR740  
AT-AR740 (-48VDC)  
AT-AR745  
AT-AR745 (-48VDC)  
AT-AR750S  
AT-AR750S-DP  
AT-AR770S

### Residential Gateways

AT-RG213FX  
AT-RG213TX  
AT-RG613BD  
AT-RG613LH  
AT-RG613SH  
AT-RG613TX  
AT-RG634A  
AT-RG644B  
AT-RG656BD

### Layer 2 Switches

AT-8000/8POE  
AT-8000S/16  
AT-8000S/24  
AT-8000S/24POE  
AT-8000S/48  
AT-8000S/48POE  
AT-8012M  
AT-8012M-QS  
AT-8016F/MT  
AT-8016F/SC  
AT-8016F/ST  
AT-8024  
AT-8024GB  
AT-8024M  
AT-8026FC  
AT-8026T  
AT-8088/MT  
AT-8088/SC  
AT-8124  
AT-8124XL (v2)  
AT-8216FXL/SC  
AT-8224XL  
AT-8324  
AT-8324SX  
AT-8326GB  
AT-8350GB  
AT-8400  
AT-8403  
AT-8411  
AT-8412/MT  
AT-8412/SC  
AT-8413GB/T  
AT-8414/SC  
AT-8414/ST  
AT-9000/24  
AT-9006SX/SC  
AT-9006T  
AT-9410GB  
12 slot chassis  
AT-8400 fan tray  
8 port (RJ-45) line card  
4 port (MT-RJ) line card  
4 port (SC) line card  
2 port (GBIC/RJ-45) line card  
4 port (SC) line card  
4 port (ST) line card

### Layer 2+ Switches

AT-8516F/SC  
AT-8524M  
AT-8524POE  
AT-8550GB  
AT-8550SP  
AT-8724XL  
AT-8724XL (-48VDC)  
AT-8748XL  
AT-8748XL (-48VDC)  
AT-9408LC/SP  
AT-9424T/GB  
AT-9424T/SP

## Layer 3 Switches

AT-8624POE  
AT-8624T/2M  
AT-8648T/2SP  
AT-8824  
AT-8848  
AT-9424Ts  
AT-9424Ts/XP  
AT-9448T/XP  
AT-9448Ts/XP  
Rapier 16F/MT  
Rapier 16F/SC  
Rapier 16F/MT  
Rapier 16F/SC  
Rapier 24  
Rapier 24i  
Rapier 48  
Rapier 48i  
Rapier G6  
Rapier G6FLX/SC  
Rapier G6FSX/MT-RJ  
Rapier G6FSX/SC

### Layer 3+ Switches

AT-8948  
AT-9724TS  
AT-9748TS/XP  
AT-9924SP  
AT-9924T  
AT-9924T/4SP  
AT-9924Ts  
AT-x900-24XS  
AT-x900-24XT  
AT-x900-24XT-N  
AT-x900-48FE

### Layer 3/4 Switches

AT-9812T  
AT-9812T (-48VDC)  
AT-9812Tf  
AT-9816GB  
AT-9816GB (-48VDC)  
AT-9816GF

### Layer 4+ Switches

AT-SB4104  
AT-SB4104 (-48VDC)  
AT-SB4108  
AT-SB4108 (-48VDC)  
AT-SB4151  
AT-SB4152  
AT-SB4211  
AT-SB4215  
AT-SB4311  
AT-SB4352  
AT-SB4411  
AT-SB4412  
AT-SB4441  
AT-SB4442  
AT-SB4451  
AT-SB4452  
AT-SB4461  
AT-SB4462  
AT-SB4541  
4 slot AC chassis  
4 slot DC chassis  
8 slot AC chassis  
8 slot DC chassis  
Fan tray for 4 slot model  
Fan tray for 8 slot model  
Switch controller  
Bandwidth expander (4 slot model only)  
48 port 10/100TX (RJ-45) line card  
32 port 100FX (MT-RJ) line card  
8 port 10/100/1000T (RJ-45) line card  
24 port 10/100/1000T (RJ-45) line card  
8 port 1000X (GBIC) line card  
24 port 1000X (SFP) line card  
8 port 1000SX (SC) line card  
8 port 1000SX (MT-RJ) line card  
8 port 1000LX (SC) line card  
8 port 1000LX (MT-RJ) line card  
1 port 10GBASE-R line card

### Media Converters

AT-CV1200  
AT-CV5000  
AT-CM202  
AT-CM212A/I  
AT-CM212B/I  
AT-CM2K05  
AT-CV101  
AT-CV102  
AT-CV1K5S  
AT-MCF06 family  
AT-MCF12 family  
AT-MCF106 family  
AT-MCF112 family  
AT-MPB3000  
AT-MCM100-01SC  
AT-MCM100-01ST  
AT-MCM100-01SMR  
AT-MCM100-01SMRF15  
AT-MCM100-02SC  
AT-MCM100-02ST  
AT-MCM100-02SMR  
AT-MCM100-02SMRF15  
AT-MCM110-01SC  
AT-MCM110-01ST  
AT-MCM110-01SMR  
AT-MCM110-01SMRF15  
AT-MCM110-02SC  
AT-MCM110-02ST  
AT-MCM110-02SMR  
AT-MCM110-02SMRF15  
AT-MCM1000S-LX1  
AT-MCM1000S-LXF15  
AT-MCM1000T-LX1  
AT-MCM1000T-LXF15  
AT-MPB100TF/2  
AT-MPB100TF/15  
AT-MPB100TF/15  
AT-MPB1000SL/10  
AT-MPB1000SL/10  
AT-MPB1010TL/10  
AT-MPB1010TL/10  
AT-PBC18  
AT-PB13  
AT-PB14  
AT-PB15  
AT-PB101  
Converteam™ 2-slot chassis  
Converteam 18-slot chassis  
10/100TX - 100FX  
10/100TX - 100FX  
10/100TX - 100FX  
10/100/1000T - 1000FX  
100TX - 100FX  
100TX - 100FX  
1000FX - 1000FX  
MPB 12-slot chassis  
Single channel 100TX - 100FX converter  
Single channel 100TX - 100FX converter  
Single channel 100TX - 100FX converter  
Single channel 100TX - 100FX converter  
Dual channel 100TX - 100FX converter  
Dual channel 100TX - 100FX converter  
Dual channel 100TX - 100FX converter  
Dual channel 100TX - 100FX converter  
Single channel 10/100TX - 100FX converter  
Single channel 10/100TX - 100FX converter  
Single channel 10/100TX - 100FX converter  
Dual channel 10/100TX - 100FX converter  
Dual channel 10/100TX - 100FX converter  
Dual channel 10/100TX - 100FX converter  
1000SX - 1000LX converter  
1000SX - 1000LX converter  
1000T - 1000LX converter  
1000T - 1000LX converter  
Remotely managed 10/100TX-FX  
converter/access device  
Remotely managed 10/100TX-FX  
converter/access device  
Remotely managed 10/100TX-FX  
converter/access device  
1000SX - 1000LX GbE converter/extender  
1000SX - 1000LX GbE converter/extender  
1000T - 1000LX GbE converter/extender  
1000T - 1000LX GbE converter/extender  
PowerBlade 18-slot chassis  
PowerBlade media converter module  
PowerBlade media converter module  
PowerBlade media converter module  
PowerBlade media converter module

AT-PB102  
AT-PB103/1  
AT-PB103/2  
AT-PB201  
AT-PB202  
AT-PB202/1  
AT-PB202/3  
AT-PB202/4  
AT-PB301  
AT-PB1001/1  
AT-PB1001/3  
AT-PB1005G

PowerBlade media converter module  
PowerBlade media converter module  
PowerBlade media converter module  
PowerBlade switch module  
PowerBlade switch module  
PowerBlade switch module  
PowerBlade switch module  
PowerBlade switch module  
PowerBlade media converter module  
PowerBlade media converter module  
PowerBlade media converter module  
PowerBlade media converter module

## Wireless

AT-WA7400  
AT-WA7500  
AT-WA7501

Enterprise wireless a, b, g access point (indoor)  
Enterprise wireless a, b, g access point IP54 enclosure (outdoor)

## Gigabit Interface Converters (GBICS)

AT-G8 series  
AT-SP series  
AT-XP series

## Optional Gigabit Expansion Modules (Uplink Modules)

AT-A14  
AT-A15SX  
AT-A15LX  
AT-A35LX/SC  
AT-A35SX/SC  
AT-A39T  
AT-A42/GBIC  
AT-A46  
AT-A47  
AT-A60  
AT-A61  
AT-A62  
AT-B15/LX  
AT-B15/SX  
AT-XEM-125  
AT-XEM-12T  
AT-XEM-1XP  
AT-XP9700

## Port Interface Cards (PICs)

AT-AR020  
AT-AR021S  
AT-AR021U  
AT-AR022  
AT-AR023  
AT-AR024  
AT-AR026  
AT-AR027

## Network Service Modules (NSMs)

AT-AR040  
AT-AR041  
AT-AR042

## Optional Fast Ethernet Expansion Modules (Uplink Modules)

AT-A16  
AT-A17  
AT-A18  
AT-A19  
AT-A40/MT  
AT-A40/SC  
AT-A41/MT  
AT-A41/SC  
AT-A45/MT  
AT-A45/SC  
AT-A45/SC-SM15  
AT-B17

## Power Accessories

AT-BRPS8000  
AT-FPS5033A  
AT-FPS5033D  
AT-PBPVWRAC  
AT-PWR10  
AT-PWR11  
AT-PWR14  
AT-PWR3004  
AT-PWR3104  
AT-PWR3204  
AT-PWR8000  
AT-PWR9700  
AT-RG005  
AT-RPS740  
AT-RPS3004  
AT-RPS3104  
AT-RPS3204  
AT-RPS8000  
AT-RPS9000  
AT-RPS9700

## Management Modules

AT-8401  
AT-BMGMT  
AT-CVSM01  
AT-MCM02  
AT-MMM-01  
AT-PBM02  
AT-SB4211  
For AT-8400 chassis  
For AT-8324SX  
For AT-CV5000  
For MCF10 and MCF100 series  
For standalone AT-MPB3000 system  
For AT-PBC18 chassis  
For SB4000 series chassis

## Stacking Modules

AT-BSTACK1  
AT-STACK8  
AT-STACKM

## Ordering Information

### AT-ALLIEDVIEW-EMSV3

AlliedView-EMS v3 (full installation)  
with 1-yr. Silver software support

### AT-ALLIEDVIEW-EMSPUGINV3

AlliedView-EMS v3 (SNMPc plug-in)  
with 1-yr. Silver software support

### AT-AVEMSSNMPCWKGP

AlliedView-EMS v3 (SNMPc plug-in)  
with 1-yr. Silver software support  
SNMPc Workgroup Edition 7

### AT-AVEMSSNMPCENT

AlliedView-EMS v3 (SNMPc plug-in)  
with 1-yr. Silver software support  
SNMPc Enterprise Edition 7

### AT-AVEMSFULL-UP

AlliedView-EMS full  
upgrade to current version

### AT-AVEMSPLUGN-UP

AlliedView-EMS SNMPc plug-in  
upgrade to current version

USA Headquarters | 19800 North Creek Parkway | Suite 200 | Bothell | WA 98011 | USA | T: +1 800 424 4284 | F: +1 425 481 3895

European Headquarters | Via Motta 24 | 6830 Chiasso | Switzerland | T: +41 91 69769.00 | F: +41 91 69769.11

Asia-Pacific Headquarters | 11 Tai Seng Link | Singapore | 534182 | T: +65 6383 3832 | F: +65 6383 3830

[www.alliedtelesis.com](http://www.alliedtelesis.com)

© 2007 Allied Telesis Inc. All rights reserved. Information in this document is subject to change without notice. All company names, logos, and product designs that are trademarks or registered trademarks are the property of their respective owners.

617-00552 Rev. O