

CC1600-Series

Rackmount Modem System



The scalable CC1600-Series 19" rackmountable card cage consolidates up to 16 V.92/56K modem cards for dial-up or 2- and 4-wire leased line service. This system is ideal for businesses that want to provide dial-in remote access, dial-in/dial-out datacomm or dial-out faxing.

Benefits

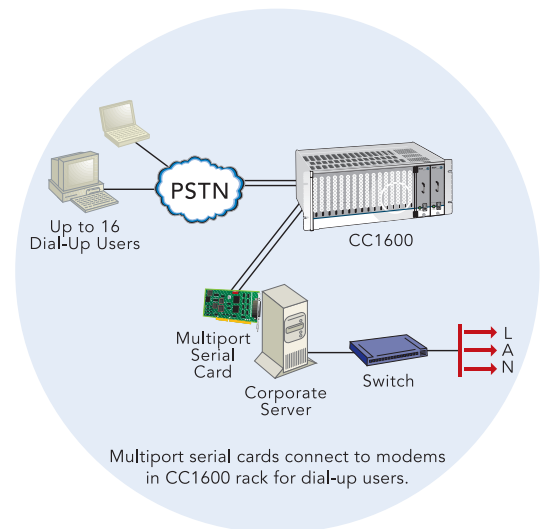
- Consolidate modems
- Easily scaled
- Proven reliability
- Easy to install

Rackmount Chassis Features

- Supports up to 16 V.92/56K modem cards
- Hot-swappable modem cards
- Hot-swappable, dual redundant power supplies*
- Easily scaled capacity to accommodate increased load/usage

Modem Card Features

- V.92/56K download speeds and 48K upload speeds when connecting with V.92 servers
- Class 1 and Class 2 faxing at 14.4K
- V.44 compression improves data throughput rates
- Synchronous and asynchronous support
- Dial-up and 2-wire leased line support
- 4-wire leased line support and dial backup
- Remote configuration for centralized setup and management
- Pass-through and fixed callback security
- U.S. caller ID reporting
- Flash memory for easy updates
- Two-year warranty



* Sold separately.

Applications

Remote Access. Give your telecommuters and road warriors access to the central site LAN and the Internet with the CC1600-Series rackmountable card cage.

Dial-Out Services. In addition to dial-in services, the CC1600-Series rack can also provide dial-out Internet access to LAN users. This eliminates the cost and hassle of installing and maintaining modems and phone lines for every desktop.

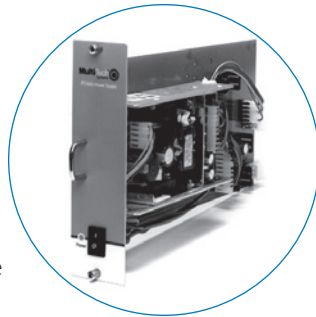
Fax Services. The CC1600-Series rack is an ideal solution for dedicated fax servers. The easily installed, reliable modems provide fax send and receive capabilities in one small rack.

System Architecture

Cost-Effective. The CC1600-Series rack conserves back office space and minimizes administration expenses by consolidating up to 16 modems in one standard equipment rack using a single power outlet.

Scalable. Scaling dial-in/dial-out services through the CC1600-Series rack is easy and cost-effective. Select the number of modem cards to meet today's networking needs. As demand grows simply add more cards to your system and preserve your initial investment.

Serviceability. The CC1600-Series rack provides the option for dual-redundant power supplies that are hot-swappable. In addition, individual modem cards are hot-swappable so a card can be installed or removed without interrupting service to the other cards on the system.



Diagnostics. The power-on self-test, local analog loop, local digital loop, and remote digital loop diagnostics provide valuable information on the CC1600-Series rack.

Fully Tested and Supported. All CC1600-Series rack components are fully tested and supported by Multi-Tech so there is only one place to call when you need technical support.

Comprehensive Service and Support. The Multi-Tech commitment to service means we provide a two-year product warranty and service that includes free telephone technical support, 24-hour web site and ftp support.

Specifications

Card Cage

Description: Metal construction with vent holes, built-in mounting brackets, & connections for power, data ports, & phone line or digital service
Power Supply: 70W fully loaded; 5VDC & ±15VDC regulated
Cooling Fan: 1
Connectors: One 3-prong grounded receptacle, 16 DB25 data ports, & 16 RJ-11 jacks

Physical Description

19" w × 7" h × 15" d
(48 cm × 18 cm × 38 cm)
Weight: 21 lbs. with 1 power supply (9.6 kg)
Operating Temp: +32° to +120° F (0 to +50° C)

Modem Cards

Rates

Data: V.92/56K downloads & 48K upload speeds from V.92 servers; V.90/56K downloads from V.90 servers, 33.6K bps transfers with other servers
Fax: 14.4K & below
Error Correction: V.42
Data Compression: V.44, V.42bis, MNP® Class 5
Fax Standards: V.17, Group 3; Class 1 & Class 2
DTE Interface: RS-232C/D

Physical Description

10.5" w × 5.5" h × 0.9" d; 1.5 lbs.
(26.7 cm × 14.0 cm × 2.2 cm; 0.68 kg)
Operating Temp: +32° to +120° F (0 to +50° C)

Ordering Information

Product	Description	Region
Card Cage		
CC1600-11L	RJ-11 Chassis (Dial-Up)	US/Can
CC1600-11L-EURO/INTL	RJ-11 Chassis (Dial-Up)	Euro/ROW
Power Supply		
PS1600*	90-245v AC Power Supply	Global
Modem Card		
MT5600BR-V92	56K Rack Modem	US/Euro

* Specify North American, European, or British-style power cord and voltage when ordering the PS1600. Power supplies are sold separately from rackmount chassis.

Made in Mounds View, MN, U.S.A.

Features and specifications are subject to change without notice.

Trademarks / Registered Trademarks: Multi-Tech, and the Multi-Tech logo: Multi-Tech Systems, Inc. / All other products and technologies are the trademarks or registered trademarks of their respective holders.

World Headquarters
Tel: (763) 785-3500
(800) 328-9717
www.multitech.com

EMEA Headquarters
Multi-Tech Systems (EMEA)
United Kingdom
Tel: +(44) 118-959 7774

Multi-Tech Systems (EMEA)
France
Tel: +(33) 1 64 61 09 81