

**EATON**

**Powerware**

**Powerware® Enclosure Solutions**

Product Focus



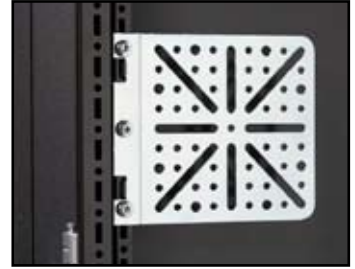
# Powerware Enclosures

IT availability and reliability are critical corporate issues in today's demanding, mission-critical environments. For this reason, it is important to ensure stable conditions for your complex server and software system architecture. While Eaton is known as a trendsetter in modern electrical and distribution technology, we continue to learn from our experience in order to anticipate your needs within the data center, both today and into the future.

It all begins with a diverse range of enclosures and accessories for your network closets, computer rooms and data centers. Our new Powerware Enclosure Solutions represent the first critical step in planning an ideal data center and complement our comprehensive power management offering. The industry leader in power quality is now the single source for your data center requirements – from planning and turnkey installation to services for the life of your data center.

Whatever your application, Eaton delivers the right solution with all the required components and systems to meet your needs and save you time and money.

When your data center and operations depend on making the right decisions, trust in the company that holds the experience, knowledge, and leading-edge products you require.



## Applications

Powerware Enclosures are deployed in a variety of applications including data centers, wiring closets, office environments, and warehouse spaces.

### Data Center

Built to house, support, and run mission-critical applications, the data center is the cornerstone of today's business. As more processing power is packed into each enclosure, it must not only meet the structural stability demands to house the equipment, but address the thermal, power and security requirements to maximize the efficiency and life expectancy of the electronic equipment.

### Wiring Closet

Typically located separately from the data center and houses network, telco, and termination type equipment. This room may also hold electronic equipment. Security, aesthetics, climate control and functionality are commonly considered in the selection process and must be part of the standard design of the enclosure.

### Office Environment

There is often a need for networking equipment to be deployed in an office environment. This can be in addition to or in replacement of the wiring closet. Aesthetics, security and functionality play major roles in the decision process.

### Warehouse

The warehouse is experiencing additional distributed processing with the increased deployment of more sophisticated inventory/package tracking systems. Physical protection, security, and functionality are important considerations when choosing an enclosure.

# Powerware Enclosures

Designed specifically for IT applications, this 42U x 600mm(w) x 1050mm(d) modern enclosure offers strength, stability and a vendor-neutral environment to house any IT equipment. The Powerware Enclosure allows for ultimate baying flexibility to create additional space in any situation. The 16-fold unique frame design delivers the highest dimensional stability and load bearing capability. The enclosure is complemented with a range of cable management, cooling and power distribution accessories to enable you to tailor your enclosures to your specific application.

## Applications:

- Universal server enclosures
- Multiple-vendor environments
- Storage equipment
- Termination equipment
- Network equipment

## Environments:

- Data centers
- MDC/IDC
- Wiring closets
- Office environments
- Central offices
- Co-location and application environments

## Features:

- Contemporary, sleek appearance
- Multiple-vendor equipment compatibility
- Full line of accessories
- Excellent heat dissipation
- Strong frame structure
- Highly functional and stylish, value packed and competitively priced

## Specifications:

- Frame system – multi-fold steel frame design for strength and rigidity
- No horizontal or vertical supports, keeping entire structure open for equipment and cable management
- Perforated roof with four 114mm holes with grommets for overhead cable management
- Torsion-free structure
- Multiple internal surfaces and mounting points
- Maximum internal volume

for footprint

- External access to all installation points for doors and walls
- Maximum load bearing capacity – 907 kg

## External Surfaces – Doors and Walls:

- Doors can be easily removed or reversed
- Sidewalls can be screwed on or locked in place
- Internal door hinge and lock points offer maximum security
- Door stiffener stabilizes door and provides additional mounting surfaces
- Maximum perforated door area meets or exceeds server manufacturer specifications for air flow
- Ground studs on all surfaces
- External surfaces do not affect load bearing capacity – same ratings with or without side walls
- Door handle provides customized locking solutions and simple ID tag capability
- Split rear doors to maximize floor space availability

## Vertical Mounting Rails:

- Designed to meet EIA-310-D standards
- Fully depth-adjustable to maintain load capacity regardless of rail positioning
- Floating isolation system

- vertical rails are not secured to frame members or lateral support channels
- can be adjusted independently
- “Z”-shaped, multi-fold profile offers high load-bearing capacity and multiple mounting surfaces
- “U” markings on front and rear near surfaces of each rail for ease of installation

## Key Accessories:

- Sidewalls - for security and thermal control
- Baying kits - for universal flexibility In joining enclosures together
- Shelves – (482”) 68 kg-113 kg capacities
- Casters - for ease of movement on flat surfaces
- Cable management hardware - reduces installation time and costs
- Bolt-down kits - for securing cabinets in place
- Blanking panels - to control airflow and improve cooling efficiency
- Universal mounting plates for mounting additional equipment and accessories in zero U spaces



**Design:** The Powerware Enclosure features modern, attractive aesthetics perfect for highly functional server applications.

Descriptions	Dimensions Millimeters	Weight Kilograms	Shipping Dimensions Millimeters	Shipping Weight Kilograms	Part Number
No Sides or Casters	2000x600x1000	99	2160x800x1200	116	1052734
With Sides, no Casters	2000x600x1000	116	2160x800x1200	133	1052735
No Sides, with Casters	2000x600x1000	104	2160x800x1200	121	1052736
With Sides and Casters	2000x600x1000	121	2160x800x1200	138	1052737



# System Accessories – Cable Management

Enclosures house more equipment than ever before. The ever-increasing demand for reliable and efficient data transmission requires the highest level of uninterrupted system performance possible. Poor cable management may lead to damaged cables, performance degradation and costly downtime.

Proper cable management ensures optimum data transmission, cost savings and cable protection. The enclosure design provides for fully open sides and bottom to maximize cable management access capability. The perforated roof houses four 114mm diameter cable access holes with grommets and plugs for easy overhead cable management. Additional cable management accessories offer a simple, flexible, and cost-effective way to organize your cables and patch cords within the cabinet.

- Integral cable retention keeps cable bundles in place
- Accommodates a variety of tool-free cable management accessories to further separate, organize, and protect cable
- Tool-free cable management mounts anywhere within the enclosure



**Product Features:**

- Front and rear cable management capabilities allow separation of distribution cables and patch cords
- Easy assembly reduces installation time
- 1U cable guides align to enclosures U spacing
- for ease of installation and maintenance
- Pass-through ports for front/rear cable routing
- Large pathways offer greater capacity and flexibility when managing high-density patch cables

Descriptions	Dimensions	Part Number
1U Cable Manager	(95x305x60mm)	1052745



**Cable Guide Rings**

For flexible, system compatible cable routing at the side of the 482.6 mm (19”) mounting frame.

Dimensions	Packs Of	Part Number
Shunting Metal Rings 80x40mm	10	1052741
Shunting Metal Rings 120x90mm	10	1052742



**Vertical Cable Tray**

The vertical cable tray accessory is designed to manage all cable management connections in the enclosure in a space saving 0U configuration for the entire height of the enclosure.

Dimensions	Part Number
42U by 150mm pairs of two	1052739
42U by 300mm pairs of two	1052740

## System Accessories – Roof, Base & Sidewall Configuration



### Sidewalls

To complete individual enclosures or bayed racks at the sides. The beading increases the rigidity of the walls while adding a special design touch. The lightweight design allows for easy handling by one person.

Dimensions	Packs Of	Part Number
424 x 1000D	2	1052738

### Material:

Sheet steel, electrophoretic dipcoat-primed, powder-coated  
Color: black

### Includes:

Two side panels



### Blanking Panels

To place in unused or vacant rack space, to block off airflow and prevent recirculation. Improves cooling efficiency within the enclosure. Installs without the need for additional hardware or tools.

Description	Color	Part Number
1U Blanking Panel	Black	1052748
2U Blanking Panel	Black	1052749
3U Blanking Panel	Black	1052750
6U Blanking Panel	Black	1052751



### Plinths

Plinths are designed to protect the enclosure from obstacles becoming trapped or lost beneath the cabinet. In addition they provide a clean and seamless appearance.

Descriptions	Dimensions Millimeters	Color	Part Number
Front/Rear Plinth Pieces	600mmx100mm	Black	1052763
Plinth Side Stabilizer Piece	1000mmx100mm	Black	1052764



### Pull Out Stabilizer

Mobile base/plinth with leveling feet and pull-out stabilizer for optimum operational safety integrated into the frame. Mainly used when Cabinet in standalone to help stop tipping forward of cabinet if equipment is pulled forward. Particularly if not bayed together or fixed securely to wall or floors.

Descriptions	Part Number
Pull Out Stabilizer	1052765

## Cooling – Fan Systems



### Roof Fan

With today's high heat loads inside server enclosures, it is critical to use thermal management techniques with optimized enclosure ventilation. Installation kit required.

Volts	Total CFM	Color	Part Number
230	210	Black	1052762
Installation Kit			1052761

## System Accessories – Shelves and Mounting



### Mounting Plate

For mounting of accessories on the vertical enclosure section or punched section with mounting flange 17 x 73 mm (.66 x 2.87") on the inner and outer mounting level.

Description	Packs Of	Part Number
Mounting Plate	4	1052759

#### Material:

Sheet steel, zinc-plated, passivated

#### Supply Includes:

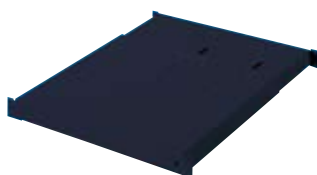
Assembly screws



### Telescoping Shelf for 19" rails

Deep Telescoping shelf (with slide mounts to 19" rails) Suitable for general small equipment mixed purpose. Makes a cost effective platform for Keyboard and Mouse hideaway etc Suitable for Steel Rack 19" Fixing only.

Color	Part Number
Black	1052746

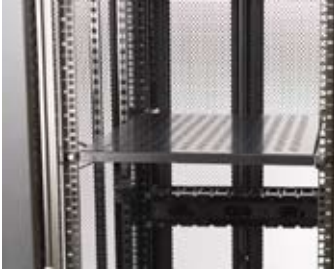


### 1U Adjustable Shelf

Rittal adjustable multipurpose shelf for mounting between the front and rear (19") 482.6mm mounting angles.

Color	Part Number
Black	1052747

## System Accessories – Shelves and Mounting



### Depth Adjustable Side Rails

Designed to adjust to application needs and support components from underneath.

Description	Part Number
Depth Adjustable Side Rails	1052755

## System Accessories – Miscellaneous Hardware



### Baying Connectors, External

For mounting on the vertical enclosure sections. Simply position on the outside and screw. Fasten either from the inside or outside.

Description	Packs Of	Part Number
Baying Clamps	6	1052754
Quick Fit Option		1052753

#### Material:

Sheet steel, zinc-plated, passivated or stainless steel 1.4301

#### Includes:

Assembly parts



### Earthing Kit

For system-compatible earthing of all enclosure parts on the enclosure frame according to VDE. The earth conductors are pre-assembled ready for connection with connectors and cut to the right length.

Description	Packs Of	Part Number
Earthing Kit	1	1052752

#### Note:

To DINEN60950/VDE0805, 04mm<sup>2</sup>, I<sub>max</sub>. 40A



### Assembly Screws M6 x 16 mm

For captive nuts, 482.6 mm (19") enclosure mount components. Plastic washers included.

Description	Packs Of	Part Number
Phillips Screw M6	100	1052758
Captive Nuts	50	1052757



### Transportation Kit

Castors make moving the rack an easy process.

Description	Packs Of	Part Number
Transportation Kit	4	1032756

UNITED STATES  
8609 Six Forks Road  
Raleigh, NC 27615 U.S.A.  
Toll Free: 1.800.356.5794

[www.powerware.com](http://www.powerware.com)

CANADA  
Ontario: 416.798.0112

LATIN AMERICA  
Argentina: 54.11.4343.6323  
Brazil: 55.11.3616.8500  
México: 52.55.5488.5252

EUROPE/MIDDLE EAST/AFRICA  
Denmark: 45.3686.7910  
Finland: 358.94.52.661  
France: 33.1.6012.7400  
Germany: 49.7841.666.0  
Italy: 39.02.66.04.05.40  
Norway: 47.23.03.65.50  
Sweden: 46.8.598.940.00  
United Kingdom: 44.1753.608.700

ASIA PACIFIC  
Australia/NZ: 61.2.9693.9366  
China: 86.21.6361.5599  
HK/Korea/Taiwan: 852.2745.6682  
India: 91.11.2649.9414 to 18  
Singapore/SEA: 65.6829.8888

Powerware, ABM, and X-Slot are  
trademarks of Eaton Electrical Inc.



**Powerware**

© 2006 Eaton Corporation  
All Rights Reserved  
Printed in USA  
RACK01FXA  
November 2007