

FLEXIBLE, FAST ETHERNET SWITCHING AT AN ATTRACTIVE PRICE



NORTEL

Product Brief

Nortel Ethernet Routing Switch 2500 Series

Nortel's Ethernet Routing Switch 2500 series combines enterprise-class features, convergence-ready functionality and investment protection in one affordable solution.

The Nortel Ethernet Routing Switch (ERS) series is a family of cost-effective 10/100BaseT Ethernet switching products perfectly suited for branch offices of larger enterprises, or the enterprise edge, requiring a low-cost but feature-rich solution in the wiring closet.

Ideal for enterprises with big plans but not-so-big budgets, the Ethernet Routing Switch 2500 offers the flexibility, scalability and cost-effectiveness to deploy next-generation technology today — while providing the high resiliency and performance you need.

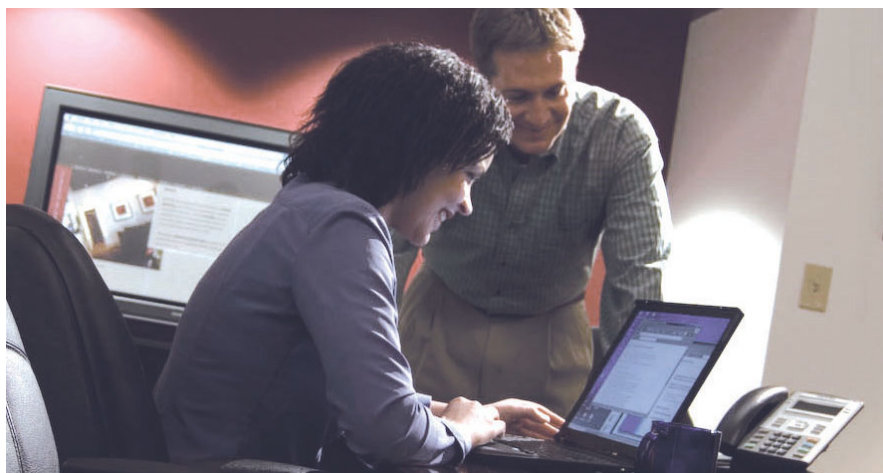
Convergence-ready, for VoIP and more

The Ethernet Routing Switch 2500 series offers outstanding value as a convergence-ready edge switch. It delivers 802.3af standards-based Power over Ethernet (PoE) to support IP Telephony and Wireless LAN access points.

As not all network devices require Power over Ethernet, the Ethernet Routing Switch 2500 provides the right mix of PoE and non-PoE ports, so you don't have to pay for power capacity that you're never likely to use. This also minimizes the concern for power and cooling requirements in the wiring closet that can sometimes be an issue with products that support PoE on all ports. This unique design results in a flexible and low-cost, convergence-ready solution that enables you to take advantage of:

- Economically priced non-PoE ports for devices such as printers, servers and other devices that don't require power from the network
- The convergence capabilities of PoE to support IP phones, network cameras, wireless access points, security, lighting and access control devices (e.g., badge readers)

Additionally, the Ethernet Routing Switch 2500 family also uses the IEEE standard 802.1AB for auto discovery of 802.1AB supporting devices such as IP handsets. Each 802.1AB-supporting device learns the identification, configuration and capabilities of neighboring devices, and provides these details to the network management system. Nortel further extends the use of this protocol by coupling it with the ability to automatically configure a port with pre-configured QoS settings and VLAN membership in the event of the detection of a Nortel IP handset. This ensures fast and easy IP handset deployments across the network.



Ethernet Routing Switch 2500

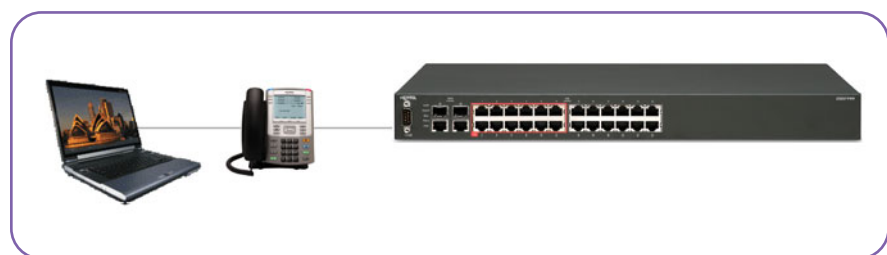
With the right mix of PoE and non-PoE ports (1/2 and 1/2), the Ethernet Routing Switch 2500 delivers the performance and convergence-ready features that until now have only been available in higher-priced switches.

Convergence is further supported through the Ethernet Routing Switch 2500's Quality of Service (QoS) features. The Ethernet Routing Switch 2500 uses standards-based 802.1p and DSCP priority queuing to prioritize mission-critical traffic such as VoIP.

Always on. Always available.

A stack of up to eight units can be created through the Ethernet Routing Switch 2500's support of fail-safe stacking.* This allows the Ethernet Routing Switch 2500 series to scale up to 384 10/100 ports and 16 10/100/1000/SFP combo ports in a single stack while maintaining its management simplicity. Furthermore, through sub-second failovers in case of switch or stacking cable failure, the Ethernet Routing Switch 2500 can offer customers a solution that allows them access to their applications and network resources any time.

Figure 1. Converged connectivity



* Requires stacking license or stack-enabled units.

Nortel Ethernet Routing Switch 2500 Series	
Model	Port configurations
ERS2526T	24 x 10/100 ports + 2 combo 10/100/1000BaseT/SFP mini-GBIC ports + 2 1000BaseT RJ-45 ports at the rear
ERS2526T PWR	24 x 10/100 ports (PoE supported on 12 ports) + 2 combo 10/100/1000BaseT/SFP mini-GBIC ports + 2 1000BaseT RJ-45 ports at the rear
ERS2550T	48 x 10/100 ports + 2 combo 10/100/1000BaseT/SFP mini-GBIC ports + 2 1000BaseT RJ-45 ports at the rear
ERS2550T PWR	48 x 10/100 ports (PoE supported on 24 ports) + 2 combo 10/100/1000BaseT/SFP mini-GBIC ports + 2 1000BaseT RJ-45 ports at the rear

Additionally, through the use of standard gigabit-grade RJ-45 cables to interconnect the Ethernet Routing Switch 2500s, this intelligent solution enables its users to benefit from all of the resilience and scalability that comes from deploying a true stacking architecture yet maintains its cost-effectiveness and simplicity.

To further complement the Ethernet Routing Switch 2500's fail-safe stacking architecture, Nortel also offers support for standards-based 802.3ad Link Aggregation as well as its own multi-link trunking technology that allows users to create the grouping of ports to form high-speed trunks/aggregations. These bundles or groups of ports can be distributed across different units in the same stack, thus delivering higher levels of resilience in case of link or switch failure, ensuring that traffic arrives at its destination.



Securing access to the network

The Ethernet Routing Switch 2500 offers high levels of security and flexibility, ensuring that only authorized personnel gain access to a company's LAN. Whether it is through use of an IEEE 802.1X-based EAP client or through a user/device MAC address, network managers can ensure that only those who have successfully been authenticated against a RADIUS server have access to their specified resources.

For further flexibility, the Ethernet Routing Switch 2500 can support the authentication of multiple devices/users on a single port. For example, if a user's PC connects into the network via an IP handset (Figure 1), the PC and the IP Phone can be authenticated for authorized use to that port. Additionally, if your company frequently has visitors, support for a Guest VLAN allows non-authenticated users to still use the network but to only have access to those resources that have been pre-specified for the Guest VLAN such as Internet access.

Enterprise-class management

The Ethernet Routing Switch 2500 series is managed through Nortel's enterprise-class Command Line Interface (NNCLI). The NNCLI provides a common industry look and feel to CLI commands, helping to reduce training and operational costs. Additionally, use of either the Java Device Manager tool or the web-based user interface makes managing the Ethernet Routing Switch 2500 simple through a graphical management interface.

Secure management of the switch occurs through encryption features such as Secure Shell (SSHv2) for encrypted telnet management access using an SSH client or through the Simple Network Management Protocol (SNMPv3). Additionally, an IP Manager List can be

used to specify which management stations can access the switch by specifying up to 10 authorized management station IP addresses.

Support for backing up and restoring an ASCII Configuration file provides the network administrator with the ability to quickly deploy the same configuration file among various switches as well as to maintain a backup of the switch configuration for future use — thus providing a solution that is simple to manage and maintain.

Lifetime warranty

All 2500 switches offer a lifetime warranty. A Nortel product hardware warranty is supported for as long as the original end user continues to own or

use the product, including fan and power supply. In the event of a discontinuance of product manufacture, the Nortel warranty support is limited to five (5) years from the announcement of discontinuance.

Summary

When it comes to deploying converged solutions for the network edge, Nortel is uniquely positioned to help your business reduce costs by combining voice and data into an integrated system. Let us show you how the Ethernet Routing Switch 2500, along with other Nortel products, can help increase your profitability, streamline your business operations, increase productivity and help you gain the competitive edge.

Ordering information

Switch versions

Order code	Description
AL2500?01-E6	Ethernet Routing Switch 2526T – 24 port 10/100BaseT and 2 combo 10/100/1000BaseT or SFP ports (not shared, 26 front ports total), plus 2 1000BaseT rear ports.
AL2500?02-E6	Ethernet Routing Switch 2550T – 48 port 10/100BaseT and 2 combo 10/100/1000BaseT or SFP ports (not shared, 50 front ports total), plus 2 1000BaseT rear ports.
AL2500?11-E6	Ethernet Routing Switch 2526T-PWR – 24 port 10/100BaseT (of which 12 ports support 802.3af PoE) and 2 combo 10/100/1000BaseT or SFP ports (not shared, 26 front ports total), plus 2 1000BaseT rear ports.
AL2500?12-E6	Ethernet Routing Switch 2550T-PWR – 48 port 10/100BaseT (of which 24 ports support 802.3af PoE) and 2 combo 10/100/1000BaseT or SFP ports (not shared, 50 front ports total), plus 2 1000BaseT rear ports.
AL2515001	Ethernet Routing Switch 2500 Stacking License Kit, for 1 switch, to enable stacking functionality on ERS2500 series switches (one license required per switch).
AL2515002	Ethernet Routing Switch 2500 Stacking License Kit, for up to 10 switches, to enable stacking functionality on ERS2500 series switches (one license required per switch).
AL2515003	Ethernet Routing Switch 2500 Stacking License Kit, for up to 50 switches, to enable stacking functionality on ERS2500 series switches (one license required per switch).
AL2515004	Ethernet Routing Switch 2500 Stacking License Kit, for up to 100 switches, to enable stacking functionality on ERS2500 series switches (one license required per switch).
AL2515?01-E6	Ethernet Routing Switch 2526T with 24 10/100 ports, 2 combo 10/100/1000/SFP ports, 2 1000BaseT rear ports & 46cm stack cbl, with stacking enabled.
AL2515?02-E6	Ethernet Routing Switch 2550T with 48 10/100 ports, 2 combo 10/100/1000/SFP ports, 2 1000BaseT rear ports & 46cm stack cbl, with stacking enabled.
AL2515?11-E6	Ethernet Routing Switch 2526T-PWR with 24 10/100 ports (12 ports support PoE), 2 combo 10/100/1000/SFP ports, 2 1000BaseT rear ports & 46cm stack cbl, with stacking enabled.
AL2515?12-E6	Ethernet Routing Switch 2550T-PWR with 48 10/100 ports (24 ports support PoE), 2 combo 10/100/1000/SFP ports, 2 1000BaseT rear ports & 46cm stack cbl, with stacking enabled.
AL2518001-E6	2500-SSC Spare Stack Cable, 46cm (1.5ft) for Ethernet Routing Switch 2500 series (for use as spare).
AL2518002-E6	2500-SSC Stack Cable 1.5m (3ft) for Ethernet Routing Switch 2500 series (spare or for use as return cable for resiliency).
AL2518003-E6	2500-SSC Stack Cable 3m (10ft) for Ethernet Routing Switch 2500 series (spare or for use as return cable for resiliency).

"?" - The seventh character (?) of the switch order number must be replaced with the proper code to indicate desired product nationalization:

"A" - No power cord included

"B" - Includes European "Schuko" power cord common in Austria, Belgium, Finland, France, Germany, The Netherlands, Norway, and Sweden

"C" - Includes power cord commonly used in the United Kingdom and Ireland

"D" - Includes power cord commonly used in Japan

"E" - Includes North American power cord

"F" - Includes Australian power cord, also commonly used in New Zealand and the People's Republic of China

Maintenance Services

Order number	Description
GE5300xxx	Technical Support Service
GL5300xxx	Return & Replace Service
GF5300xxx	Managed Spares Services Pack - Next Business Day
GG5300xxx	Managed Spares Second Business Day
GH5300xxx	Managed Spares Services Pack - 4 Hour 7x24
GJ5300xxx	Managed On-Site with Spares Services Pack - Next Business Day
GK5300xxx	Managed Onsite with Spares SBD Svc Pack
GN5300xxx	Managed On-Site with Spares Services Pack - 4 Hour 7x24

SFPs

Order code	Description
AA1419013-E5	1-port 1000Base-SX Small Form Factor Pluggable GBIC (mini-GBIC, connector type: LC).
AA1419014-E5	1-port 1000Base-SX Small Form Factor Pluggable GBIC (mini-GBIC, connector type: MT-RJ).
AA1419015-E5	1-port 1000Base-LX Small Form Factor Pluggable GBIC (mini-GBIC, connector type: LC).
AA1419025-E5	1-port 1000BaseCWDM Small Form Factor Pluggable Transceiver (mini-GBIC, connector type: LC) - 1470nm Wavelength, 40km.
AA1419026-E5	1-port 1000BaseCWDM Small Form Factor Pluggable GBIC (mini-GBIC, connector type: LC) - 1490nm Wavelength, 40km.
AA1419027-E5	1-port 1000BaseCWDM Small Form Factor Pluggable GBIC (mini-GBIC, connector type: LC) - 1510nm Wavelength, 40km.
AA1419028-E5	1-port 1000BaseCWDM Small Form Factor Pluggable GBIC (mini-GBIC, connector type: LC) - 1530nm Wavelength, 40km.
AA1419029-E5	1-port 1000BaseCWDM Small Form Factor Pluggable GBIC (mini-GBIC, connector type: LC) - 1550nm Wavelength, 40km.
AA1419030-E5	1-port 1000BaseCWDM Small Form Factor Pluggable GBIC (mini-GBIC, connector type: LC) - 1570nm Wavelength, 40km.
AA1419031-E5	1-port 1000BaseCWDM Small Form Factor Pluggable GBIC (mini-GBIC, connector type: LC) - 1590nm Wavelength, 40km.
AA1419032-E5	1-port 1000BaseCWDM Small Form Factor Pluggable GBIC (mini-GBIC, connector type: LC) - 1610nm Wavelength, 40km.
AA1419033-E5	1-port 1000BaseCWDM Small Form Factor Pluggable GBIC (mini-GBIC, connector type: LC) - 1470nm Wavelength, 70km.
AA1419034-E5	1-port 1000BaseCWDM Small Form Factor Pluggable GBIC (mini-GBIC, connector type: LC) - 1490nm Wavelength, 70km.
AA1419035-E5	1-port 1000BaseCWDM Small Form Factor Pluggable GBIC (mini-GBIC, connector type: LC) - 1510nm Wavelength, 70km.
AA1419036-E5	1-port 1000BaseCWDM Small Form Factor Pluggable GBIC (mini-GBIC, connector type: LC) - 1530nm Wavelength, 70km.
AA1419037-E5	1-port 1000BaseCWDM Small Form Factor Pluggable GBIC (mini-GBIC, connector type: LC) - 1550nm Wavelength, 70km.
AA1419038-E5	1-port 1000BaseCWDM Small Form Factor Pluggable GBIC (mini-GBIC, connector type: LC) - 1570nm Wavelength, 70km.
AA1419039-E5	1-port 1000BaseCWDM Small Form Factor Pluggable GBIC (mini-GBIC, connector type: LC) - 1590nm Wavelength, 70km.
AA1419040-E5	1-port 1000BaseCWDM Small Form Factor Pluggable GBIC (mini-GBIC, connector type: LC) - 1610nm Wavelength, 70km.
AL2511001-E6	Ethernet Routing Switch 2500 Rack Mount Kit (Spare).

For more information, visit Nortel on the Web at **www.nortel.com**. For the latest Nortel news, visit **www.nortel.com/news**.

For more information, contact your Nortel representative, or call 1-800-4 NORTEL or 1-800-466-7835 from anywhere in North America.

Nortel, the Nortel logo, Nortel Business Made Simple and the Globemark are trademarks of Nortel Networks. All other trademarks are the property of their owners.

Copyright © 2007 Nortel Networks. All rights reserved. Information in this document is subject to change without notice. Nortel assumes no responsibility for any errors that may appear in this document.

NN120140-121707

In the United States:

Nortel, 35 Davis Drive
Research Triangle Park, NC 27709 USA

In Canada:

Nortel, 195 The West Mall
Toronto, Ontario M9C 5K1 Canada

In Caribbean and Latin America:

Nortel, 1500 Concorde Terrace
Sunrise, FL 33323 USA

In Europe:

Nortel, Maidenhead Office Park, Westacott Way
Maidenhead Berkshire SL6 3QH UK
Phone: 00 800 8008 9009

In Asia:

Nortel, United Square, 101 Thomson Road
Singapore 307591
Phone: (65) 6287 2877



BUSINESS MADE SIMPLE