

HP Jetdirect 175x

External print server/internal connector for USB



The HP Jetdirect 175x external print server/Internet connector for USB lets you easily and inexpensively share printers or HP All-in-One devices through an existing Ethernet network without sacrificing quality or flexibility.

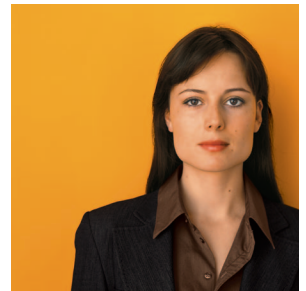
This pocket-size 10/100Base-TX print server/Internet connector uses a USB port allowing you to print anywhere, anytime.

Simple sharing

- Connect quickly to any peripheral in your office with a USB port.
- Easy setup using HP Install Network Printer Wizard software included on CD-ROM.
- Pocket-sized with an attachment clip that allows the print server to be attached almost anywhere.
- System administrators can directly install, configure, and manage the HP Jetdirect 175x external print server/Internet connector for USB with HP Web Jetadmin.

Low cost

- Economical way to share even low-cost LaserJets, Deskjets, and All-in-Ones using Ethernet network technology.
- Less expensive than purchasing a printer for each user and documents print faster than with a PC print server or file server connection.



Flexible

- Connect most HP LaserJets, Deskjets, and All-in-Ones through the USB port.
- Enables flexible location of peripherals within the office.
- Only the PC sending the print job needs to be powered on.
- Supports Windows 98, Me, NT 4.0, 2000, XP, XP 64-bit, Server 2003, and Mac OS 8.6 or above environments and 10/100Base-TX Ethernet technology—the proven standard.
- Use IP, IPX, or Apple EtherTalk and have multifunction support for scan, fax, copy, and print over the network.

HP Jetdirect 175x

Technical specifications

HP Jetdirect 175x external print server/Internet connector for USB (product number: J6035C)

General features

External I/O ports: 1 RJ-45, 1 USB
Network interface: 10/100Base-TX Ethernet
Compatible network management tools: HP Web Jetadmin
Printer management software included: HP Install Network Printer Wizard

Network types

Fast Ethernet/802.3, RJ-45 (10/100Base-TX)

System requirements

40 MB free hard disk space, CD-ROM drive

Supported peripherals

Works best with the following USB printers or HP All-in-One devices (Windows 95, 98, Me, NT, 4.0, 2000 and Mac OS 8.6 or above environments):
HP Deskjet printers: 895, 930*, 950*, 970*, 990*, 1220* series
HP LaserJet printers: 1200/1220 print/copy/scan*, 2200*, 3200* series
HP Officejet G55*, G85*, K80/K80xi printer/fax/scanner/copier (All-in-One)
HP Photosmart P1100, P1200*

*Devices are Macintosh compatible. Please verify the system requirements of your printer as well as the print server. For example, some print servers are supported in the Macintosh environment, but the printer itself may not be supported on a Macintosh.

Compatible network operating systems and protocols

Systems: Microsoft® Windows 98, Me, NT 4.0, 2000, XP 64-bit, Server 2003; Mac OS 8.6 or above
Protocols: TCP/IP, IPX/SPX Direct Mode, EtherTalk, Auto-IP, Apple Rendezvous compatible

Browsers supported

Microsoft IE 4.0 or above, Netscape 5.0 or above

Dimensions (w x h x d)

4 x 1.5 x 5 in

Weight

.26 lb

What's in the box

HP Jetdirect 175x external print server, with attachment clip, USB cable (2 ft), installation CD-ROM with HP Install Network Printer Wizard software and user guide, Quick Setup poster, power adapter

Environmental ranges

Recommended operating temperature: 32 to 131° F (0 to 55° C)
Storage temperatures: -40 to 158° F (-40 to 70° C)
Recommended operating humidity: 15 to 95% RH at 104° F (40° C) non-condensing

Power requirements

Source: 110-127 VAC
Frequency: 60 Hz

Power consumption

2.8 watts maximum

Power certification

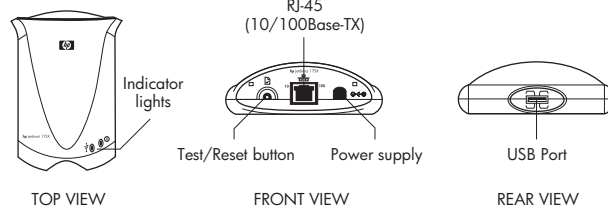
Electromagnetic compatibility
Compliant with: USA, FCC Rules; Canada, DoC
Safety: IEC 950-compliant

Warranty

One-year limited hardware warranty

Ordering information

Product number	HP product
J6035C	HP Jetdirect 175x external print server/Internet connector for USB



HP recommends Microsoft® Windows® XP Professional for mobile computing.

Microsoft, Windows, and Windows NT are U.S. registered trademarks of Microsoft Corp.
© 2003 Hewlett-Packard Development Company, L.P. The information contained herein is subject to change without notice and is provided "as is" without warranty of any kind. The warranties for HP products are set forth in the express limited warranty statements accompanying such products. Nothing herein should be construed as constituting an additional warranty. HP shall not be liable for technical or editorial errors or omissions contained herein.

For more information visit our website at www.hp.com

5980-4717ENUC, 11/19/2003, Rev. 4

