

ProCurve Switch 2810 Series

The ProCurve Switch 2810 series consists of two switches: the 24-port ProCurve Switch 2810-24G with 20 10/100/1000 ports, and the 48-port ProCurve Switch 2810-48G with 44 10/100/1000 ports. Each switch also has 4 dual-personality ports for RJ-45 10/100/1000 or mini-GBIC fiber Gigabit connectivity. Ideal for high-performance and secure 10/100 and Gigabit connectivity, the 2810 series offers access security and advanced prioritization and traffic-monitoring capabilities. The 2810 series is cost-effective and easy to use, with a shallow, stackable form factor that provides operational flexibility for use in smaller wiring closets.



ProCurve Switch
2810-24G (J9021A)



ProCurve Switch
2810-48G (J9022A)

ProCurve Switch 2810 Series

Features and benefits

Performance

- **35.7 Mpps at 64 bytes (ProCurve 2810-24G) and 71.4 Mpps at 64 bytes (ProCurve Switch 2810-48G):** ten times the bandwidth for low-latency throughput

Connectivity

- **Dual-personality functionality:** four 10/100/1000 ports or mini-GBIC slots for optional fiber connectivity such as Gigabit-SX, -LX, or -LH

Resiliency and high availability

- **IEEE 802.3ad Link Aggregation Protocol (LACP) and ProCurve trunking:** support up to 24 trunks, each with up to 8 links (ports) per trunk
- **IEEE 802.1s Multiple Spanning Tree:** provides high link availability in multiple VLAN environments by allowing multiple spanning trees; provides legacy support for IEEE 802.1d and IEEE 802.1w
- **Optional redundant power supply:** provides uninterrupted power (provided by ProCurve 600 RPS/EPS)

Layer 2 switching

- **VLAN support and tagging:** support complete IEEE 802.1Q (4,096 VLAN IDs) and 256 VLANs simultaneously
- **GARP VLAN Registration Protocol:** allows automatic learning and dynamic assignment of VLANs
- **Jumbo packet support:** supports up to 9,216 byte frame size to improve performance of large data transfers

Security

- **Port security:** allows access only to specified MAC addresses, which can be learned or specified by the administrator
- **MAC address lockout:** prevents configured particular MAC addresses from connecting to the network
- **Multiple user authentication methods:**

- **IEEE 802.1X:** industry-standard way of user authentication using an IEEE 802.1X supplicant on the client in conjunction with a RADIUS server
- **Web-based authentication:** similar to IEEE 802.1X, provides a browser-based environment to authenticate clients that do not support the IEEE 802.1X supplicant
- **MAC-based authentication:** client is authenticated with the RADIUS server based on the MAC address of the client
- **Secure FTP:** allows secure file transfer to/from the switch; protects against unwanted file downloads or unauthorized copying of switch configuration file
- **TACACS+:** eases switch management security administration by using a password authentication server
- **Source-port filtering:** allows only specified ports to communicate with each other
- **Secure Shell (SSHv2):** encrypts all transmitted data for secure, remote command-line interface (CLI) access over IP networks
- **Secure Sockets Layer (SSL):** encrypts all HTTP traffic, allowing secure access to the browser-based management GUI in the switch
- **Switch management logon security:** can require either RADIUS or TACACS+ authentication for secure switch CLI logon

Quality of Service (QoS)

- **Traffic prioritization (IEEE 802.1p):** allows real-time traffic classification into 8 priority levels mapped to 4 queues
- **Class of Service (CoS):** sets IEEE 802.1p priority tag based on IP address, IP Type of Service (ToS), L3 protocol, TCP/UDP port number, source port, and DiffServ
- **Layer 4 prioritization:** enables prioritization based on TCP/UDP port numbers

Ease of use

- **Locator LED:** allows users to set the locator LED on a specific switch to either turn on, blink, or turn off; simplifies troubleshooting by making it easy to

ProCurve Switch 2810 Series

locate a particular switch within a rack of similar switches

- **Friendly port names:** allow assignment of descriptive names to ports
- **Find-Fix-and-Inform:** finds and fixes common network problems automatically, then informs administrator
- **ProCurve/IEEE Auto-MDIX:** automatically adjusts for straight-through or crossover cables on all 10/100/1000 ports

Manageability

- **sFlow (RFC 3176):** wire-speed traffic accounting and monitoring
- **RMON:** provides advanced monitoring and reporting capabilities for statistics, history, alarms, and events
- **Dual flash images:** provide independent primary and secondary OS files for backup while upgrading
- **Stacking capability:** single IP address management for a virtual stack of up to 16 switches, including the ProCurve 2500 series, 2510 series, 2600 series, 2800 series, 3400cl series, 6108, 6400cl series,

4200vl series, and 4100gl series

- **Troubleshooting:** ingress/egress port monitoring enables network problem-solving
- **Multiple configuration files:** allow multiple config files to be stored to flash image

Convergence

- **IEEE 802.1ab LLDP discovery:** advertises and receives management information from adjacent devices on a network
- **Per-port broadcast throttling:** selectively configure broadcast control on heavy traffic port uplinks
- **Software updates:** free downloads from the Web

Industry-leading warranty

- **Lifetime warranty:** for as long as you own the product, with next-business-day advance replacement (available in most countries)

Services

ProCurve Switch 2810-24G

- 3-year, 4-hour onsite, 13x5 coverage for hardware (U2855E)
- 3-year, 4-hour onsite, 24x7 coverage for hardware (U2856E)
- 3-year, 4-hour onsite, 24x7 coverage for hardware, 24x7 software phone support (U6304E)

ProCurve Switch 2810-48G

- 3-year, 4-hour onsite, 13x5 coverage for hardware (H4496E)
- 3-year, 4-hour onsite, 24x7 coverage for hardware (H2893E)
- 3-year, 4-hour onsite, 24x7 coverage for hardware, 24x7 software phone support (U6319E)

ProCurve Switch 2810 Series



Specifications

	ProCurve Switch 2810-24G (J9021A)	ProCurve Switch 2810-48G (J9022A)
Ports	20 10/100/1000 ports (IEEE 802.3 Type 10Base-T, IEEE 802.3u Type 100Base-TX, IEEE 802.3ab 1000Base-T Gigabit Ethernet) 1 RJ-45 serial console port 4 dual-personality ports - each port can be used as either an RJ-45 10/100/1000 port (IEEE 802.3 Type 10Base-T, IEEE 802.3u Type 100Base-TX, IEEE 802.3ab 1000Base-T Gigabit Ethernet) or an open mini-GBIC slot (for use with mini-GBIC transceivers)	44 10/100/1000 ports (IEEE 802.3 Type 10Base-T, IEEE 802.3u Type 100Base-TX, IEEE 802.3ab 1000Base-T Gigabit Ethernet) 1 RJ-45 serial console port 4 dual-personality ports - each port can be used as either an RJ-45 10/100/1000 port (IEEE 802.3 Type 10Base-T, IEEE 802.3u Type 100Base-TX, IEEE 802.3ab 1000Base-T Gigabit Ethernet) or an open mini-GBIC slot (for use with mini-GBIC transceivers)
Power supplies		
Physical characteristics		
Dimensions	12.7(d) x 17.4(w) x 1.7(h) in. (32.26 x 44.2 x 4.32 cm) (1U height)	12.7(d) x 17.4(w) x 1.7(h) in. (32.26 x 44.2 x 4.32 cm) (1U height)
Weight	7.21 lb. (3.27 kg)	8.6 lb. (3.9 kg)
Memory and processor		
Processor type and speed	MIPS BCM5836 @ 264 MHz	MIPS BCM5836 @ 264 MHz
Packet buffer size	0.75 MB	1.5 MB
Flash capacity	16 MB	16 MB
SDRAM	64 MB	64 MB
Mounting	Mounts in an EIA-standard 19 in. telco rack or equipment cabinet (hardware included); horizontal surface mounting only	Mounts in an EIA-standard 19 in. telco rack or equipment cabinet (hardware included); horizontal surface mounting only
Performance		
Latency	<5.6 μ s (FIFO 64-byte packets)	<5.4 μ s (FIFO 64-byte packets)
Throughput	Up to 35.7 million pps	Up to 71.4 million pps
Switching capacity	48 Gbps	96 Gbps
MAC address table size	8,000 entries	8,000 entries
Environment		
Operating temperature	32°F to 113°F (0°C to 45°C)	32°F to 113°F (0°C to 45°C)
Operating relative humidity	15% to 95% @ 104°F (40°C), non-condensing	15% to 95% @ 104°F (40°C), non-condensing
Non-operating/storage temperature	-40°F to 158°F (-40°C to 70°C)	-40°F to 158°F (-40°C to 70°C)
Non-operating/storage relative humidity	15% to 95% @ 149°F (65°C), non-condensing	15% to 95% @ 149°F (65°C), non-condensing
Altitude	up to 10,000 ft.(3 km)	up to 10,000 ft.(3 km)
Electrical characteristics		
Maximum heat dissipation	164 BTU/hr	341 BTU/hr
Voltage	100-127 VAC/200-240 VAC	100-127 VAC/200-240 VAC
Current	1.25 A/0.75 A	2.0 A/1.0 A
Power output	60 W	100 W
Frequency	50/60 Hz	50/60 Hz
Safety	cUL (CSA 22.2 No. 60950); EN 60950/IEC 60950; NOM-019-SCFI-1994; UL 60950	cUL (CSA 22.2 No. 60950); EN 60950/IEC 60950; NOM-019-SCFI-1994; UL 60950

ProCurve Switch 2810 Series

Emissions	FCC Class A; EN55022/CISPR-22 Class A; VCCI Class A; IEC/EN61000-3-2; IEC/EN61000-3-3	FCC Class A; EN55022/CISPR-22 Class A; VCCI Class A; IEC/EN61000-3-2; IEC/EN61000-3-3
Immunity		
EN	EN55024, CISPR 24	EN55024, CISPR 24
ESD	IEC 61000-4-2; 4 kV CD, 8kV AD	IEC 61000-4-2; 4 kV CD, 8kV AD
Radiated	IEC 61000-4-3; 3V/m	IEC 61000-4-3; 3V/m
EFT/Burst	IEC 61000-4-4; 1.0 kV (power line), 0.5 kV (signal line)	IEC 61000-4-4; 1.0 kV (power line), 0.5 kV (signal line)
Surge	IEC 61000-4-5; 1 kV/2 kV AC	IEC 61000-4-5; 1 kV/2 kV AC
Conducted	IEC 61000-4-6; 3V	IEC 61000-4-6; 3V
Power frequency magnetic field	IEC 61000-4-8; 1A/m, 50 or 60 Hz	IEC 61000-4-8; 1A/m, 50 or 60 Hz
Voltage dips and interruptions	IEC 61000-4-11; >95% reduction, 0.5 period; 30% reduction, 25 periods	IEC 61000-4-11; >95% reduction, 0.5 period; 30% reduction, 25 periods
Harmonics	EN61000-3-2, IEC61000-3-2	EN61000-3-2, IEC61000-3-2
Flicker	EN61000-3-3, IEC61000-3-3	EN61000-3-3, IEC61000-3-3
Management	ProCurve Manager Plus; ProCurve Manager; command-line interface; Web browser; configuration menu; out-of-band management	ProCurve Manager Plus; ProCurve Manager; command-line interface; Web browser; configuration menu; out-of-band management
Standards and protocols	RFC 783 TFTP; RFC 951 BootP; RFC 1542 BootP; RFC 854 Telnet; RFC 768 UDP; RFC 792 ICMP; RFC 793 TCP; RFC 826 ARP; RFC 2030 Simple Network Time Protocol; IEEE 802.3x Flow Control; RFC 3376 IGMPv1/v2/v3; IEEE 802.1D Spanning Tree; IEEE 802.1w Rapid Convergence Spanning Tree; IEEE 802.1s Multiple Spanning Trees; IEEE 802.3ad Link Aggregation Control Protocol; RFC 1492 TACACS+; RFC 2138 RADIUS; RFC 2866 RADIUS accounting; SSHv2 Secure Shell; Secure Sockets Layer (SSL); IEEE 802.1X Network Login; IEEE 802.1Q VLANs; IEEE 802.1Q GVRP; IEEE 802.1p Priority; SNMPv1/v2c/v3; HTML and telnet management; RFC 1493 Bridge MIB; RFC 1213 MIB II; RFC 2096 IP Forwarding Table MIB; RFC 2737 Entity MIB; RFC 2863 Evolution of Interface; RFC 2665 Ethernet MIB; RFC 2819 Four groups of RMON: 1 (statistics), 2 (history), 3 (alarm) and 9 (events); RFC 2021 RMON probe configuration (RMON v2); RFC 2668 802.3 MAU MIB; RFC 2613 SMON; RFC 2674 802.1p and IEEE 802.1Q Bridge MIB; RFC 2618 RADIUS Client MIB; RFC 2620 RADIUS Accounting MIB; RFC 3176 sFlow	RFC 783 TFTP; RFC 951 BootP; RFC 1542 BootP; RFC 854 Telnet; RFC 768 UDP; RFC 792 ICMP; RFC 793 TCP; RFC 826 ARP; RFC 2030 Simple Network Time Protocol; IEEE 802.3x Flow Control; RFC 3376 IGMPv1/v2/v3; IEEE 802.1D Spanning Tree; IEEE 802.1w Rapid Convergence Spanning Tree; IEEE 802.1s Multiple Spanning Trees; IEEE 802.3ad Link Aggregation Control Protocol; RFC 1492 TACACS+; RFC 2138 RADIUS; RFC 2866 RADIUS accounting; SSHv2 Secure Shell; Secure Sockets Layer (SSL); IEEE 802.1X Network Login; IEEE 802.1Q VLANs; IEEE 802.1Q GVRP; IEEE 802.1p Priority; SNMPv1/v2c/v3; HTML and telnet management; RFC 1493 Bridge MIB; RFC 1213 MIB II; RFC 2096 IP Forwarding Table MIB; RFC 2737 Entity MIB; RFC 2863 Evolution of Interface; RFC 2665 Ethernet MIB; RFC 2819 Four groups of RMON: 1 (statistics), 2 (history), 3 (alarm) and 9 (events); RFC 2021 RMON probe configuration (RMON v2); RFC 2668 802.3 MAU MIB; RFC 2613 SMON; RFC 2674 802.1p and IEEE 802.1Q Bridge MIB; RFC 2618 RADIUS Client MIB; RFC 2620 RADIUS Accounting MIB; RFC 3176 sFlow
Notes	When using mini-GBICs with this product, mini-GBICs with revision "B" (product number ends with the letter "B", e.g. J4858B, J4859B) or later are required.	When using mini-GBICs with this product, mini-GBICs with revision "B" (product number ends with the letter "B", e.g. J4858B, J4859B) or later are required.

ProCurve Switch 2810 Series

Accessories



ProCurve Gigabit-LH-LC Mini-GBIC (J4860B)

with one 1000Base-LH port; designed for long-distance single-mode fiber connectivity

Ports

1 1000Base-LH port (no IEEE standard exists for 1550 nm optics)

Duplex: full

Connectors: LC

Physical characteristics

Dimensions: 2.167 (d) x 0.604 (w) x 0.463 (h) in. (5.5 x 1.53 x 1.18 cm)

Weight: 0.04 lb. (0.02 kg)

Cabling

Low metal content, single-mode fiber-optic, complying with ITU-T G.652 and ISO/IEC 793-2 Type B1

Maximum distance

70 km



ProCurve Gigabit-LX-LC Mini-GBIC (J4859B)

with one 1000Base-LX port; designed for long-distance single-mode fiber connectivity, will support multimode fiber connectivity to limited distances

Ports

1 1000Base-LX port (IEEE 802.3z Type 1000Base-LX)

Duplex: full

Connectors: LC

Physical characteristics

Dimensions: 2.24 (d) x 0.54 (w) x 0.486 (h) in. (5.69 x 1.37 x 1.23 cm)

Weight: 0.04 lb. (0.02 kg)

Cabling

Either single mode or multimode

62.5/125 μ m or 50/125 μ m (core/cladding) diameter, graded-index, low metal content, multimode fiber optic, complying with ITU-T G.651 and ISO/IEC 793-2 Type A1b or A1a, respectively

Low metal content, single-mode fiber-optic, complying with ITU-T G.652 and ISO/IEC 793-2 Type B1

Maximum distance

10 km (single mode) or 550 m (multimode)



ProCurve Gigabit-SX-LC Mini-GBIC (J4858B)

with one 1000Base-SX port; designed for short-distance (<550 m max.) multimode fiber connectivity

Ports

1 1000Base-SX port (IEEE 802.3z Type 1000Base-SX)

Duplex: full

Connectors: LC

Physical characteristics

Dimensions: 2.24 (d) x 0.54 (w) x 0.486 (h) in. (5.69 x 1.37 x 1.23 cm)
Weight: 0.04 lb. (0.02 kg)

Cabling

62.5/125 μ m or 50/125 μ m (core/cladding) diameter, graded-index, low metal content, multimode fiber optic, complying with ITU-T G.651 and ISO/IEC 793-2 Type A1b or A1a, respectively

Maximum distance

220 m (62.5 μ m core diameter, 160 MHz/km bandwidth)
275 m (62.5 μ m core diameter, 200 MHz/km bandwidth)
500 m (50 μ m core diameter, 400 MHz/km bandwidth)
550 m (50 μ m core diameter, 500 MHz/km bandwidth)

ProCurve Switch 2810 Series



ProCurve 600 Redundant External Power Supply (J8168A)

The ProCurve 600 Redundant and External Power Supply (RPS/EPS) has 6 RPS ports and 2 EPS ports and supplies backup and Power over Ethernet power.

Ports

6 RSP Ports

Each port can provide redundant +12 V power to a connected switch; only one port can provide power at a given time

2 EPS Ports

Provides +50 VDC external PoE power to up to two switch devices; provides max of 408 W full power to one device, and half power (204 W each) if connected to two devices

Physical characteristics

Dimensions: 12.83(d) x 17.44(w) x 1.73(h) in. (32.59 x 44.3 x 4.39 cm) 1U height

Weight: 11.78 lb (5.34 kg) fully loaded

Mounting

1U rack-mountable and wall-mountable enclosure using standard mounting hardware

Environment

Operating Temperature: 32 °F to 131 °F (0 °C to 55 °C)

Operating Relative Humidity: 15 % to 95 % at 104 °F (40 °C) , noncondensing

Non-operating/Storage Temperature: -40 °F to 158 °F (-40 °C to 70 °C)

Non-operating/Storage Relative Humidity: 15 % to 95 % at 149 °F (65 °C) , noncondensing

Altitude: up to 15091 ft (4.6 km)

Acoustic: Noise emission LwA=59.2 dB at virtual workspace, according to DIN 45635 T.19

Electrical characteristics

Description: The unit automatically adjusts to any voltage between 100-240 V and either 50 or 60 Hz

Voltage: 100 - 240 VAC

Current: 9 A / 5 A

Power Consumption: 800 W

RPS Power: 180 W

PoE Power: 408 W

Frequency: 50 /60 Hz

Safety

CSA 22.2 No. 60950; EN 60950/IEC 60950; UL 60950

Emissions

FCC Class A; EN55022/CISPR-22 Class A; VCCI Class A

Immunity

ESD: 4 kV CD, 8 kV AD

Radiated: 3V/m

EFT/Burst: 1.0 kV (power line), .05 kV (signal line)

Surge: 1 kV/2 kV AC

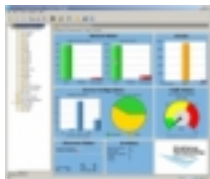
Conducted: 3V

Power frequency magnetic field: 1 A/m, 50 or 60 Hz

Voltage dips and interruptions: >95% reduction, 0.5 period; 30% reduction, 25 periods

Management

Unmanaged power supply; provides information via LEDs or through port interfaces of attached devices



ProCurve Manager 2.1 (-)

Windows-based network management for ProCurve switches

System requirements

Minimum Processor: 2.0 GHz Intel Pentium or equivalent

Recommended Processor: 3.0 GHz Intel Pentium or equivalent

Minimum Memory: 512 MB RAM

Recommended Memory: 1 GB RAM

Minimum Disk Space: 5 GB

Recommended Disk Space: 10 GB

Operating system

Microsoft Windows XP Professional (SP1 or greater), Microsoft Windows 2000 Server (SP4 or later), Microsoft Windows XP (SP1 or greater), Microsoft Windows 2003 Server

Browsers

Microsoft Internet Explorer version 5.0 or later

Features

Device auto-discovery

Topology and mapping

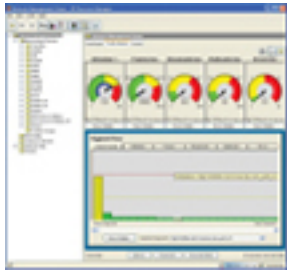
Intuitive Explorer-style interface

Usable troubleshooting data and alerts

Device configuration and management

E-mail/Pager alerts

ProCurve Switch 2810 Series



ProCurve Manager Plus 2.1 100-device limited version (J8778A)

PCM+ provides advanced device management for 100 ProCurve devices, including integration with OpenView#s Network Node Manager product.

System requirements

Minimum Processor: 2.0 GHz Intel Pentium or equivalent
Recommended Processor: 3.0 GHz Intel Pentium or equivalent
Minimum Memory: 512 MB RAM
Recommended Memory: 1 GB RAM
Minimum Disk Space: 5 GB
Recommended Disk Space: 10 GB

Operating system

Microsoft Windows XP Professional (SP1 or greater), Microsoft Windows 2000 Server (SP4 or later), Microsoft Windows XP (SP1 or greater), Microsoft Windows 2003 Server

Browsers

Microsoft Internet Explorer version 5.0 or later

Supported platforms

HP OpenView Network Node Manager version 6.41 or 7.01 or 7.5

Features

Device auto-discovery
Topology and mapping

Intuitive Explorer-style interface
Usable troubleshooting data and alerts
Device configuration and management
Customize and execute policies across groups
Enhanced network security features
Multiple device configuration management and archiving
Create and configure VLANs across the network
Traffic monitoring and analysis
Auto-configures traffic monitoring of inter-switch links
Software updates with dual flash image support
Modular design for add-in expansion
E-mail/Pager alerts
SNMP trap forwarding
Granular event data via syslog support
OpenView NNM integration
Additional requirements
Additional processing power may be necessary for extensive traffic monitoring



ProCurve Manager Plus 2.1 upgrade to unlimited license (J8779A)

PCM+ 2.1 unlimited license removes the 100 device limit on PCM+ 2.1 100 device license for companies with large device counts.

System requirements

Minimum Processor: 2.0 GHz Intel Pentium or equivalent
Recommended Processor: 3.0 GHz Intel Pentium or equivalent
Minimum Memory: 512 MB RAM
Recommended Memory: 1 GB RAM
Minimum Disk Space: 5 GB
Recommended Disk Space: 10 GB

Operating system

Microsoft Windows XP Professional, Microsoft Windows XP, Microsoft Windows 2003, Microsoft Windows XP Professional (SP1 or greater)

Browsers

Microsoft Internet Explorer version 5.0 or later

Supported platforms

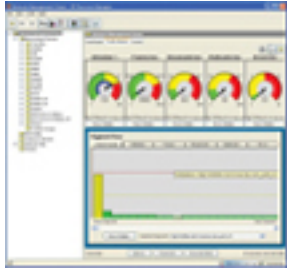
HP OpenView Network Node Manager version 6.41 or 7.01 or 7.5

Features

Device auto-discovery
Topology and mapping

Intuitive Explorer-style interface
Usable troubleshooting data and alerts
Device configuration and management
Customize and execute policies across groups
Enhanced network security features
Multiple device configuration management and archiving
Create and configure VLANs across the network
Traffic monitoring and analysis
Auto-configures traffic monitoring of inter-switch links
Software updates with dual flash image support
Modular design for add-in expansion
E-mail/Pager alerts
SNMP trap forwarding
Granular event data via syslog support
OpenView NNM integration
Additional requirements
Additional processing power may be necessary for extensive traffic monitoring

ProCurve Switch 2810 Series



ProCurve Manager Plus 2.1 100-device upgrade (J8991A)

ProCurve Manager Plus 2.1 100 device Upgrade adds new PCM+ 2.1 functionality to previously purchased PCM+ 1.6 or greater PCM+ 1.5 releases.

System requirements

Minimum Processor: 2.0 GHz Intel Pentium or equivalent

Recommended Processor: 3.0 GHz Intel Pentium or equivalent

Minimum Memory: 512 MB RAM

Recommended Memory: 1 GB RAM

Minimum Disk Space: 5 GB

Recommended Disk Space: 10 GB

Operating system

Microsoft Windows XP Professional, Microsoft

Windows XP, Microsoft Windows 2003,

Microsoft Windows XP Professional (SP1 or greater)

Browsers

Microsoft Internet Explorer version 5.0 or later

Supported platforms

HP OpenView Network Node Manager version

6.41 or 7.01 or 7.5 (optional)

Features

Device auto-discovery

Topology and mapping

Intuitive Explorer-style interface

Usable troubleshooting data and alerts

Device configuration and management

Customize and execute policies across groups

Enhanced network security features

Multiple device configuration management and archiving

Create and configure VLANs across the network

Traffic monitoring and analysis

Auto-configures traffic monitoring of inter-switch links

Software updates with dual flash image support

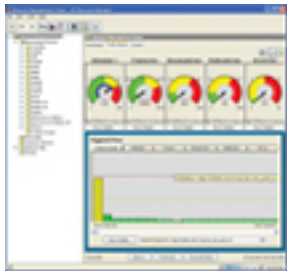
Modular design for add-in expansion

E-mail/Pager alerts

SNMP trap forwarding

Granular event data via syslog support

OpenView NNM integration



ProCurve Manager Plus 2.1 unlimited license (J9009A)

PCM+ 2.1 unlimited license provides a PCM+ license that does not limit the number of devices managed (It does NOT require the 100 device license).

System requirements

Minimum Processor: 2.0 GHz Intel Pentium or equivalent

Recommended Processor: 3.0 GHz Intel Pentium or equivalent

Minimum Memory: 512 MB RAM

Recommended Memory: 1 GB RAM

Minimum Disk Space: 5 GB

Recommended Disk Space: 10 GB

Operating system

Microsoft Windows XP Professional, Microsoft

Windows XP, Microsoft Windows 2003,

Microsoft Windows XP Professional (SP1 or greater)

Browsers

Microsoft Internet Explorer version 5.0 or later

Supported platforms

HP OpenView Network Node Manager version

6.41 or 7.01 or 7.5

RADIUS server support

Microsoft IAS

Features

Device auto-discovery

Topology and mapping

Intuitive Explorer-style interface

Usable troubleshooting data and alerts

Device configuration and management

Customize and execute policies across groups

Enhanced network security features

Multiple device configuration management and archiving

Create and configure VLANs across the network

Traffic monitoring and analysis

Auto-configures traffic monitoring of inter-switch links

Software updates with dual flash image support

Modular design for add-in expansion

E-mail/Pager alerts

SNMP trap forwarding

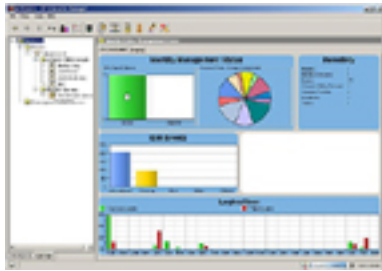
Granular event data via syslog support

OpenView NNM integration

Additional requirements

Additional processing power may be necessary for extensive traffic monitoring

ProCurve Switch 2810 Series



Identity Driven Manager 2.0 base product--500-user license (J9012A)

ProCurve Identity Driven Manager is a plug-in to ProCurve Manager Plus that dynamically applies security and performance settings based on user, device, location, time, and client system state -- 500 user license

System requirements

Minimum Processor: 2.0 GHz Intel Pentium or equivalent

Recommended Processor: 3.0 GHz Intel Pentium or equivalent

Minimum Memory: 512 MB RAM

Recommended Memory: 1 GB RAM

Minimum Disk Space: 5 GB

Recommended Disk Space: 10 GB

Operating system

Microsoft Windows XP Professional (SP1 or greater), Microsoft Windows 2000 Server, Advanced Server or Professional with SP4 or better, Microsoft Windows XP (SP1 or greater), Microsoft Windows 2003 Server

Browsers

Microsoft Internet Explorer version 5.0 or later

Required platforms

HP OpenView Network Node Manager version 6.41 or 7.01 or 7.5

RADIUS server support

Microsoft IAS, Funk Steelbelted RADIUS Server, FreeRADIUS (on Red Hat ES3 or ES4 or SuSe Linux 9)

Features

Intuitive Explorer-style interface

OpenView NNM integration

Application of policies by user identity

-Auto VLAN assignment

-Auto set quality of service by user

-Auto set bandwidth assignment by user

Rule-based access rights deployment

Dynamic rights assignment based on:

-Time

-Location

-User system

Auto-discovery of:

-RADIUS servers

-Realms

-Users

Additional requirements

Large numbers of users may require more disk space.

Identity Driven Manager 2.0 base product (upgrade from v1.0) (J9013A)

Identity Driven Manager 2.0 500 user upgrade from v1.0 allows existing v1.0 customers to get the features of v2.0, with a 500-user limitation.

System requirements

Minimum Processor: 2.0 GHz Intel Pentium or equivalent

Recommended Processor: 3.0 GHz Intel Pentium or equivalent

Minimum Memory: 512 MB RAM

Recommended Memory: 1 GB RAM

Minimum Disk Space: 5 GB

Recommended Disk Space: 10 GB

Operating system

Microsoft Windows XP Professional (SP1 or greater), Microsoft Windows 2000 Server (SP4 or later), Microsoft Windows XP (SP1 or greater), Microsoft Windows 2003 Server

Browsers

Microsoft Internet Explorer version 5.0 or later

Required platforms

ProCurve Manager Plus version 2.1

Supported platforms

HP OpenView Network Node Manager version 6.41 or 7.01 or 7.5

RADIUS server support

Microsoft IAS, Funk Steelbelted RADIUS Server, FreeRADIUS (on Red Hat ES3 or ES4 or SuSe Linux 9)

Features

Intuitive Explorer-style interface

OpenView NNM integration

Application of policies by user identity

-Auto VLAN assignment

-Auto set quality of service by user

-Auto set bandwidth assignment by user

Rule-based access rights deployment

Dynamic rights assignment based on:

-Time

-Location

-User system

Auto-discovery of:

-RADIUS servers

-Realms

-Users

ProCurve Switch 2810 Series

Identity Driven Manager 2.0--add 2000 users license (J9014A)

Adds support for 2000 additional users to the base Identity Driven Manager 2.0 product

System requirements

Minimum Processor: 2.0 GHz Intel Pentium or equivalent

Recommended Processor: 3.0 GHz Intel Pentium or equivalent

Minimum Memory: 512 MB RAM

Recommended Memory: 1 GB RAM

Minimum Disk Space: 5 GB

Recommended Disk Space: 10 GB

Operating system

Microsoft Windows XP Professional (SP1 or greater), Microsoft Windows 2000 Server, Advanced Server or Professional with SP4 or better, Microsoft Windows XP (SP1 or greater), Microsoft Windows 2003 Server

Browsers

Microsoft Internet Explorer version 5.0 or later

Supported platforms

HP OpenView Network Node Manager version 6.41 or 7.01 or 7.5

RADIUS server support

Microsoft IAS, Funk Steelbelted RADIUS Server, FreeRADIUS (on Red Hat ES3 or ES4 or SuSe Linux 9)

Features

Intuitive Explorer-style interface

OpenView NNM integration

Application of policies by user identity

-Auto VLAN assignment

-Auto set quality of service by user

-Auto set bandwidth assignment by user

Rule-based access rights deployment

Dynamic rights assignment based on:

-Time

-Location

-User system

Auto-discovery of:

-RADIUS servers

-Realms

-Users

Additional requirements

If the number of users exceeds 10,000, additional processing power and disks may be required.

© 2006 Hewlett-Packard Development Company, L.P. The information contained herein is subject to change without notice. The only warranties for HP products and services are set forth in the express warranty statements accompanying such products and services. Nothing herein should be construed as constituting an additional warranty. HP shall not be liable for technical or editorial errors or omissions contained herein.

08/28/06

To learn more, visit www.procurve.com
Information is subject to change without notice

