

Affordable Network Capacity



Need a quantum leap in office network capability? NETGEAR delivers a cost-effective solution – the JFS524. This unmanaged 10/100 Fast Ethernet switch provides expanded connectivity for small office networks so users no longer have to compete with each other for bandwidth. All of the essential features – automatic speed and full/half duplex sensing, 200 Mbps throughput per port, Auto Uplink™ – are included, but at an economical price that a value-conscious business owner can't ignore.

**Frugal**

Twenty-four ports of speed and capacity at a modest price, with no compromising on quality – that's what you can expect from NETGEAR's hardworking JFS524.

**Skillful**

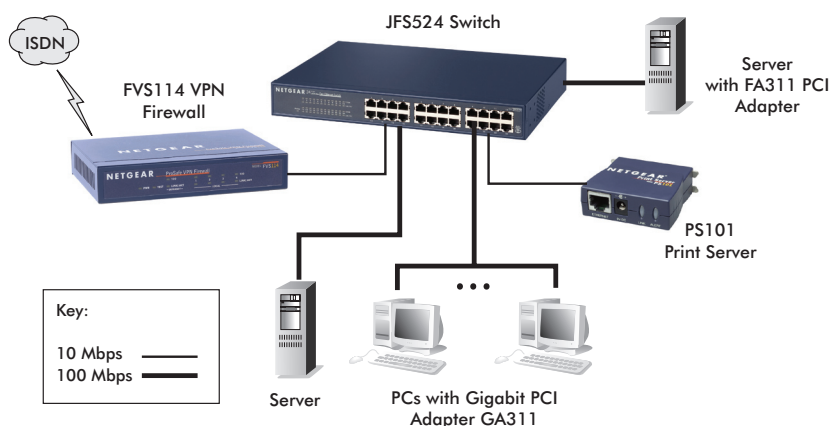
Switched 10/100 ports provide private bandwidth for PCs, servers, or hubs, and support 200 Mbps of throughput. Each port delivers 200 Mbps of network speed in full-duplex mode.

**Alert**

Ever-vigilant, the JFS524 begins to operate as soon as it's powered on – with no configuration required. All 24 ports deliver automatic speed and full/half duplex sensing, plus Auto Uplink™, which adjusts for straight-through or crossover cables to make the right link.

**Obliging**

This rugged metal unit is conveniently compact for an uncluttered desktop or easy rack mounting. And it lets you easily intermix 10 and 100 Mbps devices within your unmanaged network.



**Technical Specifications****• Network Ports**

- 16 10 or 100 Mbps RJ-45 ports

**• Performance (64 byte packets)**

- Store-and-forward packet switching
- Forward rate (10 Mbps)  
14,800 packet per sec.
- Forward rate (100 Mbps)  
148,000 packet per sec.
- Latency (10 to 100 Mbps) 20 usec max
- MAC addresses 4,000
- Queue buffer KBytes 320

**• Physical Specifications**

- Dimensions (h x w x d):  
43 x 330 x 202 mm  
(1.7 x 13 x 8 in)
- Weight: 2.0 kg (4.4 lb)

**• AC Power**

- 15W maximum
- Auto-sensing 100 to 240V, 50/60 Hz
- Localized plug for North America,  
Japan, UK, Europe, Australia

**• Standards Compliance**

- IEEE 802.3i 10BASE-T Ethernet
- IEEE 802.3u 100BASE-TX Fast Ethernet
- Compatible with all major network  
software

**• Status LEDs**

- Unit: Power
- Per network port: 10 or 100 Mbps  
operations, Rx/Tx and collision, link,  
half/full duplex

**• Electromagnetic Emissions**

- CE mark, commercial
- FCC Part 15 Class
- EN 55 022 (CISPR 22), Class A
- VCCI Class A
- C-Tick
- MIC

**• Environmental Specifications**

- Operating temperature: 0° to 40° C
- Operating humidity: 80% max.  
relative humidity, non-condensing

**• Safety Agency Approvals**

- UL listed (UL 1950)/CUL

**Warranty**

- NETGEAR Lifetime Warranty†

**ProSupport™ Service Packs Available****• On Call 24 x 7**

- PMB0331-100 (US)
- PMB0331 (non-US)

**• Xpress HW**

- PRR0331

**Package Contents**

- ProSafe 24-Port 10/100 Fast Ethernet  
Switch (JFS524)
- Power cord
- Rack-mount kit
- User guide
- Warranty card
- Support card

**Ordering Information**

- North America: JFS524NA
- Europe: JFS524-100EUS
- Asia: JFS524AU
- Japan: JFS524JP

**NETGEAR®**

4500 Great America Parkway  
Santa Clara, CA 95054 USA  
1-888-NETGEAR (638-4327)  
E-mail: info@NETGEAR.com  
www.NETGEAR.com

© 2007 NETGEAR, Inc. NETGEAR, the NETGEAR logo, Connect with Innovation, Everybody's connecting, the Gear Guy logo, IntelliFi, ProSafe, RangeMax and Smart Wizard are trademarks or registered trademarks of NETGEAR, Inc. in the United States and/or other countries. Microsoft, Windows, and the Windows logo are trademarks or registered trademarks of Microsoft Corporation in the United States and/or other countries. Other brand and product names are trademarks or registered trademarks of their respective holders. Information is subject to change without notice. All rights reserved.

\*Free basic installation support provided for 90 days from date of purchase. Advanced product features and configurations are not included in free basic installation support; optional premium support available.

†Lifetime warranty for product purchased after 05/01/2007. For product purchased before 05/01/2007, warranty is 2 years.